



June 13th, 2021 ~ 9:30 AM

ALL ARE WELCOME!

INTRODUCTION

The mustard seed becomes a great shrub that shelters the birds, recalling ancient images of the tree of life. We'd expect a cedar or a sequoia, but Jesus finds the power of God better imaged in a tiny, no-account seed.

It's not the way we expect divine activity to look. Yet the tree of life is here, in the cross around which we gather, the tree into which we are grafted through baptism, the true vine that nourishes us with its fruit in the cup we share. It may not appear all that impressive, but while nobody's looking it grows with a power beyond our understanding.

GATHERING

(*Indicates to please rise as you are able in body, mind, or in spirit.)

*GATHERING SONG

The Feast is Ready



1 The trum - pets sound, the an - gels sing, the feast is
2 Ta - bles are la - den with good things; oh, taste the
3 The hun - gry heart he sat - is - fies, of - fers the



read - y to be - gin. The gates of heav'n are o - pen wide,
peace and joy he brings. He'll fill you up with love di - vine;
poor his par - a - dise. Now hear all heav'n and earth ap - plaud



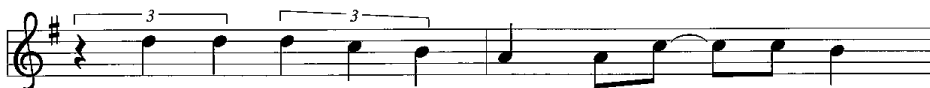
and Je - sus wel - comes you in - side.
he'll turn your wa - ter in - to wine.
the a - maz - ing good - ness of the Lord.



Sing with thank - ful - ness songs of pure de - light.



Come and rev - el in heav - en's love and light.



Take your place at the ta - ble of the King.



The feast is read - y to be - gin;



the feast is read - y to be - gin.

GATHERING PRAYER

WELCOME & INVOCATION

*CONFESSION & FORGIVENESS

All may make the sign of the cross, the sign marked at baptism, as the presiding minister begins.

Blessed be the holy Trinity, † one God, the God of manna, the God of miracles, the God of mercy. **Amen.**

Drawn to Christ and seeking God's abundance, let us confess our sin.

God, our provider, **help us. It is hard to believe there is enough to share. We question your ways when they differ from the ways of the world in which we live. We turn to our own understanding rather than trusting in you. We take offense at your teachings and your ways. Turn us again to you. Where else can we turn? Share with us the words of eternal life and feed us for life in the world. Amen.**

Beloved people of God: in Jesus, the manna from heaven, you are fed and nourished. By Jesus, the worker of miracles, there is always more than enough. Through Jesus, † the bread of life, you are shown God's mercy: you are forgiven and loved into abundant life. **Amen.**

*HYMN

Come, Thou Fount of Every Blessing



1 Come, thou Fount of ev - 'ry bless-ing, tune my heart to sing thy grace;
2 Here I raise my Eb - en - e - zer: "Hith-er by thy help I've come";
3 Oh, to grace how great a debt - or dai - ly I'm con-strained to be;



streams of mer - cy, nev - er ceas - ing, call for songs of loud-est praise.
and I hope, by thy good plea-sure, safe - ly to ar - rive at home.
let that grace now like a fet - ter bind my wan-d'ring heart to thee.



While the hope of end-less glo - ry fills my heart with joy and love,
Je - sus sought me when a strang-er, wan-d'ring from the fold of God;
Prone to wan - der, Lord, I feel it; prone to leave the God I love.



teach me ev - er to a - dore thee; may I still thy good-ness prove.
he, to res - cue me from dan-ger, in - ter - posed his pre - cious blood.
Here's my heart, oh, take and seal it; seal it for thy courts a - bove.

*PRAYER OF THE DAY

O God, you are the tree of life, offering shelter to all the world. Graft us into yourself and nurture our growth, that we may bear your truth and love to those in need, through Jesus Christ, our Savior and Lord. **Amen.**

WORD

PRAYER OF ILLUMINATION

PSALM

Ezekiel 17:22-24

Thus says the Lord God:

I myself will take a sprig
from the lofty top of a cedar;
I will set it out.

I will break off a tender one
from the topmost of its young twigs;

I myself will plant it
on a high and lofty mountain.

²³On the mountain height of Israel
I will plant it,

in order that it may produce boughs and bear fruit,
and become a noble cedar.

Under it every kind of bird will live;
in the shade of its branches will nest
winged creatures of every kind.

²⁴All the trees of the field shall know
that I am the Lord.

I bring low the high tree,
I make high the low tree;

I dry up the green tree
and make the dry tree flourish.

I the Lord have spoken;
I will accomplish it.

*GOSPEL READING

Mark 4:26-34

*The Holy Gospel according to Mark. **Glory to You, O Lord.***

[Jesus] said, "The kingdom of God is as if someone would scatter seed on the ground,²⁷and would sleep and rise night and day, and the seed would sprout and grow, he does not know how. ²⁸The earth produces of itself, first the stalk, then the head, then the full grain in the head. ²⁹But when the grain is ripe, at once he goes in with his sickle, because the harvest has come."

³⁰He also said, "With what can we compare the kingdom of God, or what parable will we use for it? ³¹It is like a mustard seed, which, when sown upon the ground, is the smallest of all the seeds on earth; ³²yet when it is sown it grows up and becomes the greatest of all shrubs, and puts forth large branches, so that the birds of the air can make nests in its shade."

³³With many such parables he spoke the word to them, as they were able to hear it; ³⁴he did not speak to them except in parables, but he explained everything in private to his disciples.

*The gospel of the Lord. **Praise to you, O Christ.***

SERMON

Pastor David Young



1 How clear is our vo - ca - tion, Lord, when once we heed your call
 2 But if, for - get - ful, we should find your yoke is hard to bear;
 3 We mar - vel how your saints be - come in hin - dranc - es more sure;
 4 In what you give us, Lord, to do, to - geth - er or a - lone,



to live ac - cord - ing to your word and dai - ly learn, re - freshed, re - stored,
 if world - ly pres - sures fray the mind and love it - self can - not un - wind
 whose joy - ful vir - tues put to shame the ca - sual way we wear your name,
 in old rou - tines or ven - tures new, may we not cease to look to you,



that you are Lord of all and will not let us fall.
 its tan - gled skein of care: our in - ward life re - pair.
 and by our faults ob - scure your pow'r to cleanse and cure.
 the cross you hung up - on, all you en - deav - ored done.

Text: Fred Pratt Green, 1903–2000
 Music: REPTON, C. Hubert H. Parry, 1848–1918
 Text © 1982 Hope Publishing Company, Carol Stream, IL 60188. All rights reserved. Used by permission.

OUR STATEMENT OF FAITH

The Apostles' Creed

I believe in God, the Father almighty, creator of heaven and earth.

I believe in Jesus Christ, God's only Son, our Lord, who was conceived by the power of the Holy Spirit, born of the Virgin Mary, suffered under Pontius Pilate, was crucified, died, and was buried; he descended to the dead. On the third day he rose again; he ascended into heaven, he is seated at the right hand of the Father, and he will come to judge the living and the dead.

I believe in the Holy Spirit, the holy catholic Church, the communion of saints, the forgiveness of sins, the resurrection of the body, and the life everlasting. Amen

PRAYERS OF INTERCESSION

Let us come before the triune God in prayer.

Holy God, you plant the seeds of faith in every nation. Enliven your church, so that *it may share the good news of your grace with all people, and be a partner with people of other faiths in working for justice and peace.* Lord, in your mercy, **hear our prayer.**

Creator, even the trees, shrubs, and flowers delight in your goodness. From the depths of the soil to the highest mountain, bring forth new plants. Restore growth to places suffering drought. Lord, in your mercy, **hear our prayer.**

Judge of nations, we pray for our leaders and those in power. Grant them the *grace* to regard those under their charge with humility, dedicating their lives in service to others. *And, may citizens hold their leaders accountable to their public trust.* Lord in your mercy, **hear our prayer.**

Divine comforter, you show compassion to those in need and provide relief to those who call on you. Bless all who suffer, especially people trapped in cycles of poverty, *debt*, and homelessness. Lord, in your mercy, **hear our prayer.**

Sovereign God, this house of worship belongs to you. We give thanks and pray for our church musicians, *both staff and volunteers.* We dedicate to you the joyful noise that comes from this place; the cries of children, the melody of voice and instruments, and the songs from our hearts. Lord, in your mercy, **hear our prayer.**

Creator God, Your creation displays mind-boggling diversity. Help us to embrace with gratitude this wondrous diversity in plants, in animals, and in humans, created in Your image. Lord, in your mercy, **hear our prayer.**

Eternal God, we give thanks for our ancestors in the faith who are now at home with you, especially Clint Nichols and all those we name aloud now, or in the silence of our hearts. *(Pause)* We look forward to that day when we are reunited in your new creation. Lord, in your mercy, **hear our prayer.**

We lift our prayers to you, O God, trusting in your abiding grace. **Amen.**

SHARING OF CHRIST'S PEACE

HOLY COMMUNION

OFFERING

*Thank you for your continued support of mission and ministry at Bethel!
To make an offering, please use one of the methods below:*

1. Mail to Bethel at 2077 N Frederick Pike, Winchester, VA 22603
2. Use the "Give Now" button on our website.
3. Donate via text, by sending the dollar amount you wish to give, including a dollar sign, (ie: \$50/\$50.00) to 844-946-2995.

MUSICAL REFLECTION

"Bell Jubilee"

Music by Anna Laura Page

Offered by the OffeRings Chime Choir

Charlene Romano, Flute

*THE GREAT THANKSGIVING

The Lord be with you! **And also with you!**

Lift up your hearts! **We lift them to the Lord!**

Let us give thanks to the Lord our God. **It is right to give our thanks and praise!**

*JESUS' WORDS ABOUT COMMUNION & THE LORD'S PRAYER

Our Father, who art in heaven, hallowed be thy name, thy kingdom come, thy will be done, on earth as it is in heaven. Give us this day. Our daily bread; and forgive us our trespasses, as we forgive those who trespass against us; and lead us not into temptation, but deliver us from evil. For thine is the kingdom and the power, and the glory, forever and ever. Amen.

INVITATION TO COMMUNION

*Today we celebrate the first communion of Dixie & Riggs Longfellow.
They are the children of Andrea Longfellow.*

SENDING

*BLESSING

The body and blood of our Lord Jesus Christ strengthen you and keep you in his grace. **Amen.**
The blessing of God, who provides for us, feeds us, and journeys with us, ☩ be upon you now and forever. **Amen.**

*SENDING SONG

God Be With You Till We Meet Again



1 God be with you till we meet a - gain; by good coun-sels guide, up - hold you,
2 God be with you till we meet a - gain; ho - ly wings se - cure - ly hide you,
3 God be with you till we meet a - gain; when life's per - ils thick con - found you,



with a shep-herd's care en - fold you;
dai - ly man - na still pro - vide you; God be with you till we meet a - gain.
put un - fail - ing arms a - round you;

Refrain



Till we meet, till we meet, till we meet at Je - sus' feet;



till we meet, till we meet, God be with you till we meet a - gain.

Text: Jeremiah E. Rankin, 1828–1904

Music: GOD BE WITH YOU, William G. Tomer, 1833–1896

*DISMISSAL

Go in peace. You are the body of Christ. **Thanks be to God!**

BETHEL LUTHERAN CHURCH

2077 North Frederick Pike, Winchester, VA 22603, 540-662-3245
Office Hours: Monday-Wednesday 9:00 a.m. - 12:00 p.m.
www.bethelwinchester.com

Rev. Dr. David N. Young, Pastor
pastordave@bethelwinchester.com, Ext. 105

George W. Donovan, Jr., Director of Music
george@bethelwinchester.com

Sue Correll, Organist & Associate Director of Music
sueellen.correll@gmail.com

Kim Williams, Office Administrator/Bookkeeper
bookkeeper@bethelwinchester.com, Ext. 103

Kristin Siebert, Parish Communicator
communicator@bethelwinchester.com

Shari Fletcher, Church Secretary
secretary@bethelwinchester.com

Cliff Crowder, Director of Facility Management
ukcrowder@aol.com

Edie McGoff, Parish Nurse
emcgoff@gmail.com

Patty White, Parish Custodian
annwhite54@aol.com

Gretchen Meade, Nursery Manager
office@bethelwinchester.com

