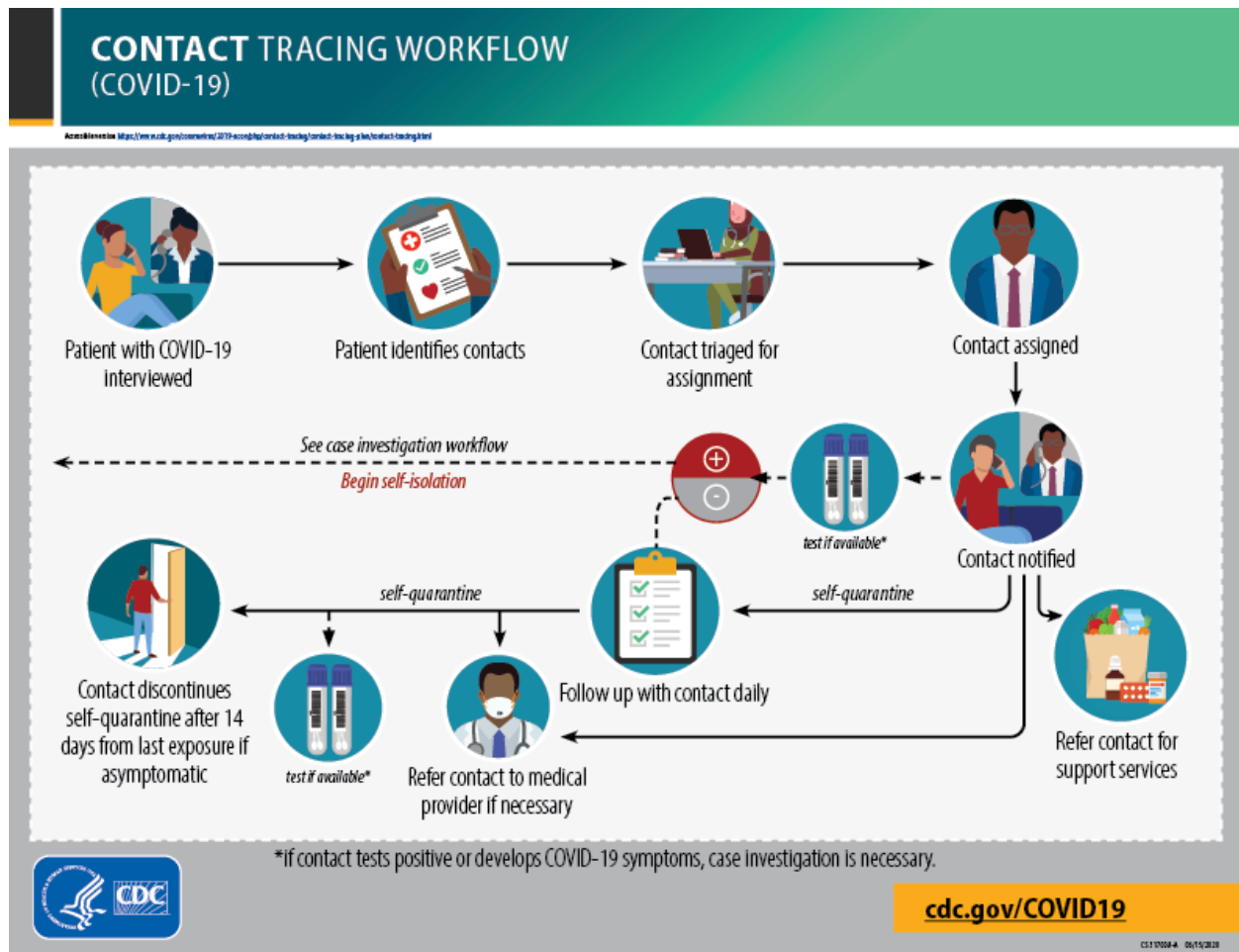


# WHY AND HOW DO WE DO CONTACT TRACING



[Chart.png](#)

**Contact tracing** is a key disease control measure used by local and state health departments as a key strategy to prevent the spread of disease.

We will soon be asking you to sign a sheet, with the date, time in/out, your name, and where you were in the church. This is important so we can locate and talk with people if necessary and ensure the area has been cleaned in case someone has been infected with the COVID-19 virus and they didn't know it.

Given the magnitude of COVID-19 cases and plans to eventually relax efforts such as stay at home orders and social distancing, communities need a way to quickly locate and talk with people who have been in close contact with someone that is or recently been found to be infected.

Identifying contacts and ensuring they do not interact with others is critical to protect communities from further spread.