

2017 Annual Ministry Reports



Bethel Lutheran Church

www.bethelwinchester.com

A community growing deeper in faith and wider in love.

Bethel Lutheran Church Leadership

Council Members for 2018

President – Tom Milburn
Vice President – Traci Shoberg
Secretary – Julie Shanabrook
Treasurer – Rose Pierce

Michael Asmussen
Pat Blevins
Trevor Brazelton
Beth Garner
David Griffin

Ministry Board Chairs for 2018

Worship Board – Pastor Dave
Servant Board – Beth Garner
Learning Board – Trevor Brazelton

Congregational Life Board – David Griffin
Prayer and Care Board – Pat Blevins
Ministry Support Board – Michael Asmussen

Staff Email Addresses

Pastor David Young
Director of Youth & Faith Formation (Bryan Jaster)
Director of Music Ministries (Sue Correll)
Director of Office Ministries (Terri Hollingsworth)
Director of Finance (Kim Williams)
Director of Facility Management (Cliff Crowder)
Director of Information Management (Pat Shields)
Faith Community Nurse (Arlene Gavitt)
Director of Custodial Services (Patty White)
Director of Nursery Care (Gretchen Meade)

pastordave@bethelwinchester.com
bryan@bethelwinchester.com
sueellen.correll@gmail.com
office@bethelwinchester.com
bookkeeper@bethelwinchester.com
office@bethelwinchester.com
betheldatabase@aol.com
office@bethelwinchester.com
annwhite54@aol.com
office@bethelwinchester.com

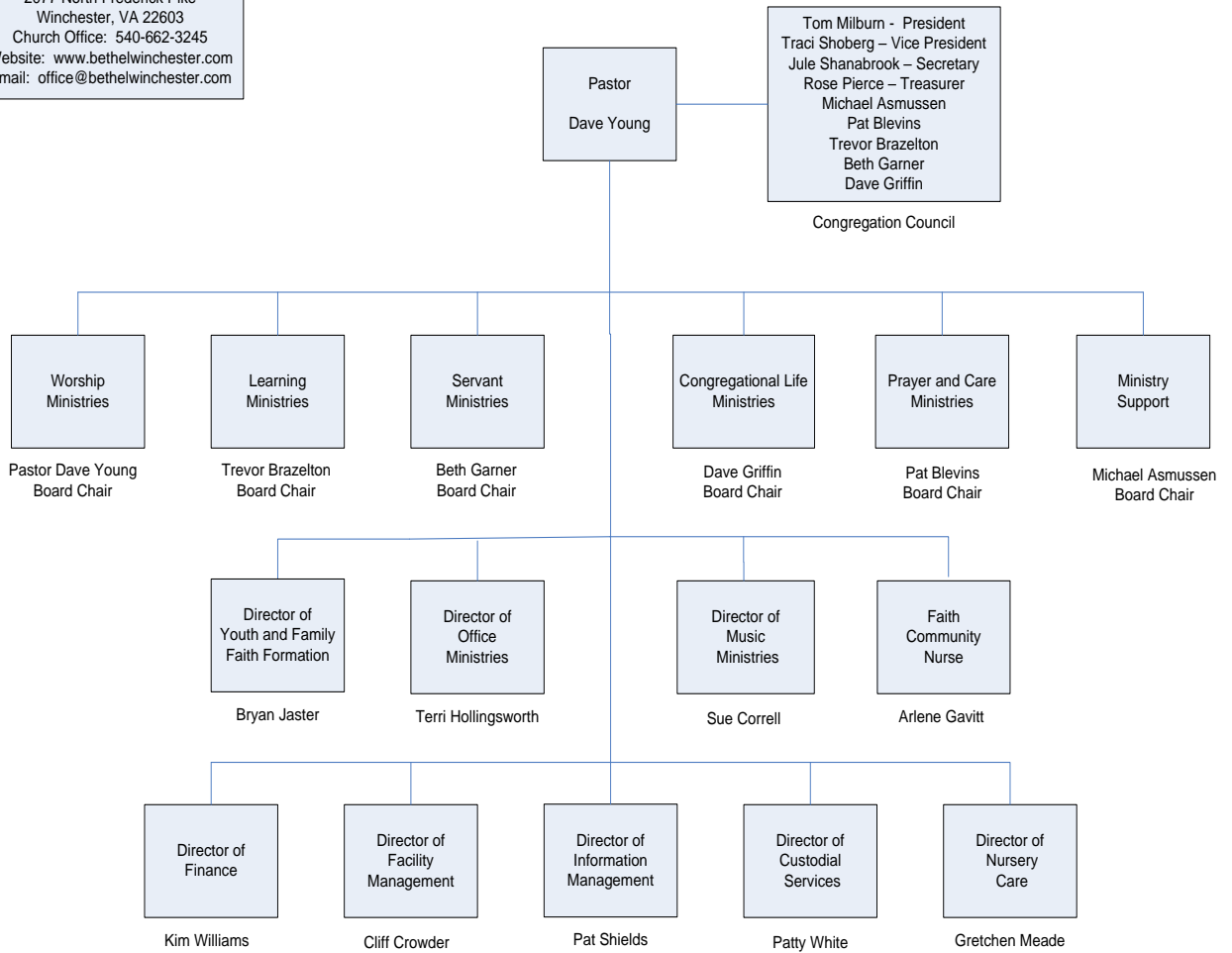
Bethel Lutheran Church Telephone Information

Church Office		540-662-3245
Fax Number		540-450-1313
<i>Person</i>		<i>Extensions:</i>
Office		100
Pastor David Young	Pastor	105
Bryan Jaster	Youth and Family Faith Formation	104
Terri Hollingsworth	Director of Office Ministries	100
Sue Correll	Director of Music Ministries	102
Kim Williams	Director of Finance	103
Cliff Crowder	Director of Facility Management	106
<i>Additional Phone Locations</i>		
Conference Room		112
Kitchen		113
Student Center "Underground"		116
Dale King	Director of Our Family Center	107

Bethel Lutheran Church Organizational Structure

January 2018

2077 North Frederick Pike
 Winchester, VA 22603
 Church Office: 540-662-3245
 Website: www.bethelwinchester.com
 Email: office@bethelwinchester.com



Annual Pastor's Report

*I pray that Christ may dwell in your hearts through faith,
as you are being rooted and grounded in love," Ephesians 3: 16-17*

Significant Events from 2017:

- 1) We held a year-long celebration of the 500th Anniversary of the Reformation, offering many learning and fellowship opportunities, including: Lenten study of the Small Catechism; a visit from the **Thiel College Choir** (March); a year-long Reformation study in Adult Forum; a Lutheran "Movie Night" on Palm Sunday with authentic German food (Thank You, **Edel Frank**); and a beautiful Reformation themed piano concert by our friend, **Richard Jeric**; and we hosted our first Oktoberfest on the Bethel Grounds and raised over \$1000 for charity (Thank you to **Ray Meeker** for your leadership on, what we hope will become a yearly event)
- 2) We hosted outgoing VA Synod Bishop **Jim Mauney** for his final sermon as Bishop (August), and then welcomed newly elected VA Synod Bishop **Bob Humphrey** for his first sermon as Bishop (October).
- 3) In August and September, 19 people from Bethel traveled to Germany for a Reformation Tour, "*In the Footsteps of Martin Luther and Dietrich Bonhoeffer*," led by Pastor Dave and Pastor Heidi.
- 4) In the spirit of the Reformation mantra, "priesthood of all believers", we commissioned a new Preaching Team (**Bruce Lothrop, Doug Newell, Mike Stanfield, and Michelle Young**). Additionally, we welcomed some wonderful new lay teachers, **Steve and Debbie Miller**, into our Disciple Bible Study.
- 5) We welcomed friends from our missions in Guatemala (April) and India (November) into our midst to share more about their ministry with us. We made a generous contribution of **over \$37,000 to Bethania**.

We received **27 new members** in 2017, including 11 baptisms (**3 adults**). Bethel has received over 250 new members since 2010. Our average worship was **223** in 2017. Moving to one service in the summer has affected this average, but the benefit of gathering as ONE has many benefits and blessings. We plan to continue this in 2018.

I am so thankful for our wonderful staff. **Bryan Jaster, Terri Hollingsworth, Kim Williams, and Pat Shields** are tremendous colleagues and keep the office and ministries of Bethel running efficiently and joyfully. **Patty White, Cliff Crowder** and **Gretchen Meade** are valuable team members doing much of the behind-the-scenes tasks that make Bethel thrive!

Finally, a sincere and heartfelt **Thank you** for all the ways that you have gone above and beyond to help support Bethel as we strive always to be *a community growing deeper in faith and wider in love!*

In Christ,
Pastor Dave

President's Report

For just as each of us has one body with many members, and these members do not all have the same function, so in Christ we, though many, form one body, and each member belongs to all the others. We have different gifts, according to the grace given to each of us. If your gift is prophesying, then prophesy in accordance to your faith; if it is serving, then serve; if it is teaching, then teach; if it is to encourage, then give encouragement; if it is giving, then give generously; if it is to lead, do it diligently; if it is to show mercy, do it cheerfully. Romans 12:4-8

Sisters and Brothers in Christ,

This is the standard time to take stock in what has transpired, to look at the past year and its challenges and blessings. And at Bethel we had many of each again in 2017. I will focus on the blessings:

- Jubilee continues to amaze as we paid down our mortgage significantly.
- Annual giving almost met expenses due to the Congregation's outpouring and our staff's frugality. We begin 2018 with designated and emergency funds intact and a carryover of operating cash.
- Bethel's local and global missions lived out in so many ways.
- Reception of wonderful new members to our family.
- Beautiful music and worship that our Ensemble, Music Director and Pastor lead.
- Celebration of our Lutheran heritage during Reformation, especially our new Oktoberfest tradition.
- The continued faith formation and discipleship that we teach our children and youth.

Your Congregation Council is an extraordinary group with varied experiences and talents. When the group meets, you can tell that the Spirit is at work. Our recent Council Retreat was amazingly productive. Not only do your Council members commit to that service, they also commit to an officer spot or to chair a worship board. So please say thank you to them, or better yet, volunteer to help.

I would like to specifically thank the Executive Committee and our outgoing members. Three of us have been serving on Executive for two years together. Two true Bethel Ladies deserve our appreciation for their dedication and service. Traci Shoberg has been our Treasurer for 2016-17. She has led us through challenging times with grace, calm and professionalism. Rose Pierce has been our Secretary for 2016-17. Rose's "can do" attitude about any task or challenge and her ability to keep us in line is invaluable. It's been a joy to have these two as partners in crime. I would also like to thank our outgoing members – Bob Hollingsworth and Adrian Pullen. Bob served as Vice President in 2017. Bob has served in many roles at Bethel and his knowledge and wisdom were amazingly helpful. And we thank Adrian for his service. Adrian's insight and love for Bethel, especially our youth and property, were wonderful. Bethel thanks you and our continuing Council members, and welcomes Beth Garner and Mike Asmussen to Council.

We are blessed with a wonderful staff at Bethel. Thanks to each of them every day for what they do to make Bethel work. And thanks to Pastor Dave, who tirelessly shepherds the flock, sets the course and makes Bethel a wonderful church.

And thank you to the Congregation. The enthusiasm, faithfulness, love and joy our members show for this place is our greatest blessing.

Now it is time to look forward to 2018 and for two plugs: (1) Get involved – join a ministry board, volunteer with youth, volunteer as a worship assistant, teach Sunday School, or serve in whatever way you feel called; and (2) Be heard – we are beginning our new strategic planning process, "Bethel Reforming." Cottage meetings are planned so please attend and help us remember our purpose and prioritize how to meet our mission. Great things are ahead for Bethel, please be a part of it.

Peace,
Tom Milburn, Congregation Council President

Youth and Family Ministries

The Year of Our Lord 2017

Stories of the mission and ministry of youth and families forming faith together....

Our every night, every home revolution at an evolutionary pace launched by high school youth called Faith5 continues to grow in the character and competency of Jesus. Our movement has been tagged the “unfinished symphony of the reformation.” In the fall, Rich Melheim came to town for a phenomenal time learning the ancient future ways of Jesus that we keep faith formation in the hands and hearts of ordinary people. We had 30 leaders from the Winchester area learning with us during the day and a “family” pillow fight in the evening. What a gift!

Advent 2017 had the most people connecting with 80 prayer partners, 30 families participating in nightly worship, and preparing the way for Jesus together. It’s a blast mixing the wisdom of the elder and the wonder of child in the most age segregated time any culture has ever known. We’re figuring out how to take the best of what we are learning about the brain, about the ancient future church, daily faith practices, about making disciples and bring it all together. In this day and age of “too busy” we dare to cling tight to holy time and space to share the most important story lest it is never known by generations to come!

Synod events are a huge gift to our youth and congregation. Our time up on the mountain at Eagle Eyrie for 7th Day, and Lost and Found and Winter Celebration were glorious. Izzy McKee and Ella Carlson served on the planning teams for 7th day and Lost and Found!

Our year of **Confirmation** continues to be gift freshman students, families and mentors who learn the information, imitation and innovation of making disciples of one another. Confirmation camp and the story of Matthew were tremendous through the leadership of Pastor Dave, Bryan Jaster and many synod pastors. Youth remarked “Jesus is SAVAGE in Matthew 23!” ☺ The closing gathering around the labyrinth, meal and worship on reformation is powerful, holy time. Our 4 youth sharing faith on reformation Sunday captivated our community.

Bethel Week at Camp – Caroline Furnace continues to experience a wondrous rebirth. We had 25 children and youth from Bethel go to camp the last week of July for “Imitators of God”. In our time of increasing reliance on technology to mediate relationships there is a great gift in the place apart camp is. Everyone serves, worships, prays, listens, loves, heals, plays, and learns at camp! Our youth director serves as camp chaplain for the week.

Vacation Bible School – “Hero Central – Discover Your Strength in God” 2nd week June brought over 60 kids, 20 youth and 20 adults together for a glorious week learning about the God’s heros called to have courage, strength, wisdom, hope and love! We went OUTSIDE taking advantage of the amazing Bethel park for a wondrous week. This was our first step towards 2 days of training high school youth well to lead and lead all aspects of VBS. We partnered with Lutheran Family services to supply the summer therapeutic day treatment program with science and math educational materials.

Service Learning – Disciples serve and learn the ways of Jesus. Youth cook and serve meal for WATTS. We met and learned from a refugee whose family now lives in Winchester and video conferenced with Lutheran Refugee Relief. White Sock Drop with Teens Opposing Poverty gives us all a glimpse at the daily challenges for those living on the streets

Youth Mission in Guatemala – wearegraces.org – The new executive director from La Escuela Integrada came to Bethel where many new people got connected to our Youth Mission. Many more children were sponsored and have been as well through “Global Christmas.” We plan to return with youth and adults to La Escuela Integrada in Antigua, Guatemala in the summer of 2019 to listen, serve, purchase “estufas” for families, bring food to people during home visits and return home with the story of Jesus.

It’s the best time we have ever seen to be church together! We live in a time where the message of the cross and the kingdom coming is truly unique, counter cultural and a surprising gift to the world around us. Let us love and live like Jesus together in 2018!

In the hope of the empty tomb,
Bryan Jaster

MINISTRY INCOME

REGULAR TITHES & OFFERINGS

Envelope & Loose Offerings	\$466,176	
SUBTOTAL TITHES & OFFERINGS:		\$466,176

FACILITY USE INCOME

Other Facility Use	<u>\$17,590</u>	
SUBTOTAL FACILITY USE:		\$17,590

OTHER INCOME

Interest & Investment Income	\$ 149	
Thrivent Choice	<u>\$4,339</u>	
SUBTOTAL OTHER INCOME:		\$4,488

TOTAL MINISTRY INCOME: \$488,254

MINISTRY SPENDING

COMMITMENT TO THE WIDER CHURCH

Virginia Synod Benevolence Commitment	<u>\$33,800</u>	
SUBTOTAL WIDER CHURCH:		\$33,800

WORSHIP

Altar & Sanctuary Care Ministries	\$557	
Music Ministries	\$2,634	
Resources & Publications	\$3,674	
Special Events-Christmas in a Barn	\$0	
Other	<u>\$1,129</u>	
SUBTOTAL WORSHIP:		\$7,994

LEARNING

Curriculum & Supplies	\$3,257	
Annual & Special Events	\$308	
Vacation Bible School	\$776	
Other	\$442	
	<hr/>	
SUBTOTAL LEARNING:		\$4,783

CONGREGATIONAL LIFE

Youth	\$3,803	
F3-Children's Group	\$0	
Adults	\$479	
Annual & Special Events	\$480	
	<hr/>	
SUBTOTAL CONGREGATIONAL LIFE:		\$4,762

SERVANT

WATTS	\$0	
Feed the Need	\$0	
Other	\$21	
	<hr/>	
SUBTOTAL SERVANT:		\$21

CARE

Welcome Baskets	\$331	
Greeting Cards	\$0	
Funeral Receptions	\$0	
College Care Packages	\$98	
Faith Community Nursing	\$0	
Other	\$0	
	<hr/>	
SUBTOTAL PRAYER & CARE:		\$429

STEWARDSHIP

Leadership Development and Recruiting	\$3,038	
Communication	\$2,621	
Devotional Materials	\$330	
Supplies and Materials	\$3,630	
Other	\$0	
	<hr/>	
SUBTOTAL STEWARDSHIP:		\$9,619

STAFF PAYROLL

Salaries	\$221,705	
Taxes & Benefits	\$83,155	
	<hr/>	
SUBTOTAL STAFF PAYROLL:		\$304,860

ADMINISTRATION

Office Supplies	\$2,810	
Shipping & Postage	\$1,342	
Copier Lease and Printing	\$4,932	
Equipment Repairs & Upgrades	\$2,880	
	<hr/>	
SUBTOTAL ADMINISTRATION:		\$11,964

UTILITIES

Alarm Monitoring	\$2,900	
Electric	\$14,270	
Gas	\$16,517	
Telephone/Internet Access	\$6,142	
	<hr/>	
SUBTOTAL UTILITIES:		\$39,829

FACILITY

Repairs & Materials	\$14,459	
Lawn Care & Snow Removal	\$11,510	
Trash Removal	\$2,055	
Pest Control	\$1,629	
Cleaning Supplies	\$1,462	
Insurances & Licenses	\$11,039	
Other	\$747	
	<hr/>	
SUBTOTAL FACILITY :		\$42,901

MORTGAGE LOAN EXPENSE

Mortgage Loan Payments	<u>\$33,792</u>	
		<u>\$33,792</u>

TOTAL MINISTRY SPENDING:		<u>\$494,754</u>
---------------------------------	--	-------------------------

INCOME (LOSS):		<u>(\$6,500)</u>
-----------------------	--	-------------------------

MORTGAGE LOAN

Principle remaining as of December 31, 2017		<u>\$236,688</u>
---	--	------------------

Contributions needed each year to pay monthly mortgage		\$25,644
--	--	----------

JUBILEECAMPAIGN RESULTS

Principal Balance at December 31, 2012		\$797,768
--	--	-----------

Principal Balance at December 31, 2017		\$236,688
--	--	-----------

Overall Decrease in Principal Balance		<u>\$561,080</u>
---------------------------------------	--	-------------------------

DESIGNATED MINISTRIES as of December 31, 2017

FOR THE WORLD

World Hunger Appeal	\$7,940	
Tanzania Missions	\$3,195	
The Philippines Missions	\$3,085	
Guatemala Missions	\$634	
India Missions	\$1,369	
Shalom Home	\$37,133	
General Missions	\$921	
Global Christmas	\$6,918	
CCS Sponsorships	\$6,010	
Harvest Sunday	\$1,746	
Hurricane Relief	\$2,750	
OctoberFest Hurricane Relief	\$927	
SUBTOTAL:		\$72,628

FOR THE COMMUNITY

CCAP	\$10,984	
Good Samaritan	\$2,305	
Lenten Food Drive cash donations	\$460	
Faith in Action	\$205	
WATTs	\$341	
Miscellaneous	\$0	
Jones/Joyner Music Fund	\$8,188	
SUBTOTAL:		\$22,483

FOR THE BETHEL COMMUNITY

Student Mission Scholarships	\$547	
Mortgage Principal Payments	\$60,392	
Youth (Easter, other)	\$1,149	
Martins Cards Cash for Causes (Youth)	\$0	
Bethel Park & Scatter Garden	\$11,700	
Memorials	\$11,250	
Endowment	\$88,264	
SUBTOTAL:		\$173,302

TOTAL DESIGNATED:

\$268,413

Servant Board

HARVEST SUNDAY- Team Leader, Julie Shanabrook

Many thanks to everyone who participated in our 16th annual Harvest Sunday on August 13! We were able to raise \$1,745.72 for Lutheran World Relief. We were aided by a \$250 Thrivent Action Teams grant. We continue to be grateful that through Harvest Sunday Bethel can contribute to the mission of Lutheran World Relief: "Affirming God's love for all people, we work with Lutherans and partners around the world to end poverty, injustice and human suffering."

HOEDOWN – Team Leader, Dana Francis

This year we held the Hoedown inside because of the weather. This did not dampen the attendance or the fun. Approximately 75 to 100 from the community and 25 from Bethel attended. On a personal note, my children grew up at this event and this was the first year that Kelly did not attend. I was asked about her by a few of the guests and actually "face timed" her so they could say hi. That was really fun! We continue to have intentional "fun", with relationships strengthened and exercise completed with dancing throughout the night. Dave Shoberg is invaluable with his DJ skills. I continue to be very passionate about this ministry and consider the attendees my friends. The church community is very generous in supporting this activity, providing donations for food and attending to assist with set up, clean up and food serving. We may consider holding the event inside yearly, as we would not have to worry about the weather.

WATTS (Winchester Area Temporary Thermal Shelter) – Team Leaders, Judy McKiernan/Marion Schottelkorb

Thanks to our wonderful Bethel Congregation and a host of volunteers and partners from other congregations and civic groups we, once again, had a successful and grace filled WATTS week at Bethel in February 2017. We were at capacity each night. In addition to nutritious hot meals each evening, Lisa McKee provided haircuts one evening, showers were available two evenings, breakfast was served each morning and a packed lunch was available for those who desired one. There was an average of 40 volunteers helping with all the operations each day. Evenings included a variety of entertainment, music from the Redland Praise Team, bingo by Westminster Canterbury, movies, games and good old-fashioned fellowship with lots of hugs and warm smiles.

BETHEL GLOBAL MISSIONS – Team Leader, Bruce Lothrop

Highlights are from the GM Team are:

1. We raised \$6300 for our mission partners in our Global Christmas fundraiser.
2. We officially included Escuela Integrada as a mission partner, in conjunction with our youth ministries, with a focus on supporting the school's women's empowerment program. We plan to sponsor trips to the school in Antigua, Guatemala every three years. This is an exciting opportunity to help our high school students connect with peers in developing world through our common Christian Faith.
3. We contributed \$37,133 to allow Bethania Kids to build a wall so that construction can begin for the new Shalom Home for Girls.

Submitted by Julie Shanabrook, Servant Board Chair

Congregational Life Board

The Congregational Life Board is a mixture of many teams who work within the Bethel community of faith to strengthen the lives of members by helping our church family connect with each other. The Board sponsors teams to oversee fellowship activities and encourage inter-generational faith growth across the diverse spectrum of Bethel believers. We add new teams if a group has a passion to spark additional congregational life activities. Below is a short summary of the success stories for 2017 from the Congregational Life Board.

BICENTENNIAL. Bethel will be 200 years strong in 2020. This team is beginning to work on the celebration plans for our Bicentennial as well as preparing and updating the history of the church.

FAITH BOXES. The boxes are provided to our parishioners (young or old) during their first sacramental ceremony at Bethel. They then have a special space to hold the items that represented milestones in their faith journey, such as the baptismal certificate and candle, pictures, a first communion chalice, or a copy of the faith statement from confirmation. Whatever is meaningful to an individual is appropriate to place in the box as a keepsake to remind them of some of the highlights along their journey. In early November our team of young men and old completed 30 boxes and stockpiled them for future use. Because Steve Francis has all these cool power tools we always gather there to do the work. Along with the excellent contribution of the Turrill sons, who are especially interested in woodworking, the team can get the project done in an afternoon. This team is celebrating 16 years of service to Bethel.

F3. Faith Fellowship and Fun for youth at Bethel. A St. Patrick's Day event-learning about St. Patrick, decorating cookies, eating green snacks, an April day at Caroline Furnace Camp, a late August pool party at the Carlson's with food and fellowship and fall Pumpkin painting and s'mores topped the most popular of the 2017 year's activities.

MENTORING. This new congregational life team is designed to continue a part of the intergenerational program begun years back during our "Year of Service." MENToring is Bethel men and teenaged guys 14 and up who share, discuss and gather as men growing together in Christ. The group undertakes "manly" things such as hiking, rafting, motor vehicles of all types, camping, firearms, and Barbeque while discussing the challenges of men following Jesus and building relationships to serve as mentoring for congregational young men.

MEN'S RETREAT. 2017 found a close cadre of men attending a weekend retreat at Grave's Mountain Lodge under the theme of Luther as Husband, Father and Friend. This location is an amazing place, and this event is again scheduled for November 2-4, 2018.

OCTOBERFEST. Bethel celebrated the 500th anniversary of the Reformation with a Lutheran Oktoberfest. A party 500 year in the making! This event was led by Ray Meeker, a master event man that would make Martin Luther proud. From Greg Brondos wearing his lederhosen serving frothy mugs of beer to Trevor Brazelton as grillmaster serving up schnitzel, this was a congregational gathering like no other. Dave Shoberg spun amazing tunes, the kids played in a bounce house or tossed beanbags for corn hole, and folks chose their favorite of Martin Luther's 95 theses and nailed them up on the Wittenberg Castle door. The chicken dance is one for the books. Between this event and individual donations, the Bethel community raised \$3680.00 for ELCA hurricane relief. We will do this again on Saturday October 6, 2018 at 3 pm. Come join the Bethel family festival!

RECEPTIONS. Under the Team Leadership of Kathryn Carpenter this remarkable team hosted congregational receptions three times for new members, two receptions for first communion, graduate reception, the reception for Bishop Mauney, a reception for confirmation and reformation as well as for the congregational and stewardship meeting.

SHRIMP BOIL. This legendary annual event is a great Bethel gathering. This amazing congregational life Board team presents a big southern style cooking of shrimp, corn, sausage, potatoes, onions and seasonings and we gather round, dump it on the table, add piping hot hush puppies and dig in. Once again we had a phenomenal event and no one left hungry. The team served 100 lbs. of shrimp, 40 lbs. of hush puppies, 30 lbs. onions, 40 lbs. of Kielbasa and 10 dozen ears of corn. Stay tuned as the team puts on the event again in September of 2018.

SMALL GROUPS. Faith is something best shared! Small Groups are an important foundation of the ministry, mission, and congregational life at Bethel. Small groups of 6-12 people meet weekly/bi-weekly and generally in the homes of group members. Small groups connect people to Christ's church by bringing God's Word into daily living, serving the church and community, and sharing the love of Christ, mutual support, and having a lot of fun together. Life revolves around relationships. Jesus became the first small group leader when he gathered his disciples to learn about him and grow in their faith. And that's exactly what Small Groups at Bethel are designed to do. Small groups

offer a Christian community, growing deeper in faith and wider in love, where everyone is cared for. Small groups promote unity, a sense of belonging to one another and a place to bless, grow, serve and challenge one another using each person's spiritual gifts.

STUDENT MINISTRIES. 2017 presented a variety of Youth events and programs. We have had many wonderful Underground evenings, cook outs, and mission trips. Our youth grow and mature in their faith and their secular life as we reach and teach. Our youth attended both Winter Celebration and Lost and Found. Relationships between Bethel youth and both Escuela Integrada in Guatemala, and Bethania Kids in India are growing.

WOMAN'S CHRISTMAS DINNER. Women and friends of Bethel joined together again for an evening of fun, food, and fellowship on December 10 in Discipleship Hall. Approximately 30 ladies attended and broke bread together with catering provided by Jordan Spring's Market. We did utilize Bethel's disposable service ware. Emily Whitacre helped with decorations and all women helped with clean up. The evening ended by 7 pm after a colorful gift exchange. There was a nice mixture of women age wise and membership to Bethel.

WOMAN'S RETREAT PLANNING. The Women's Retreat for 2017 was held at Bethel and was a day and a half retreat with 20 women attending. The theme, "Finding Joy in the Seasons of our Souls" was led by speaker and author, Jill Baughan, from Richmond, VA. The retreat had sessions broken into the seasons of the year and the participants were led through a faith journey for each of the seasons of their lives. We enjoyed Bible study, games, fellowship, singing, walking the labyrinth, crafts, meals and snacks with each other, sitting around a fire pit, a balloon release to give our highs and lows in our faith life up to God, and releasing Chinese Paper Lanterns at the conclusion to give thanks to God for our time together as women of Christ. Food was catered and guest musicians, Tyler and Katelynn Seal, were hired to lead a Saturday afternoon praise and worship sing along. The retreat ended in a worship service- led by Pastor Heidi and the women offered communion to each other. The next retreat planning team is being established and will look at whether to have another retreat at the church or to go to a venue. By having the retreat at the church, the cost was less than half of the cost of retreats in the past (\$75.00) per participant. The small planning team is thankful to those at Bethel who helped with many little things along the way. We know this ministry speaks to those who come again and again and again. We give praise to God for the talents offered and look forward to where He leads us in 2018!

YARD SALE COMMITTEE. Our annual yard sale was held July 15, raising \$1566.00. Team members worked during the week to organize and price items prior to and assisted customers during the sale. Afterward, unsold items were boxed for donation to other organizations, including the Greenwood Fire and Rescue for their yard sale event the following week. A huge thank you to everyone who helped with the yard sale, some observations and suggestions from the team: Attendance was down compared to prior years -- could this be because we discontinued offering clothing? It was suggested that we accept children's clothing only, a good sales draw. 2. Fewer items of value were donated – naturally, affecting sales figures. Should we consider holding the yard sale every other year? 3. Youth participation could benefit their fundraising – in prior years, our youth sold hot dogs and drinks during the sale. 4. Need help at the end of the sale – the Team ran out of steam after working all day at the sale. We plan to ask for help to arrive at the end of the sale to help pack up and deliver the unsold items that day, so that Discipleship Hall can be re-set for Sunday!

Thank you for the opportunity to be of service.

J. David Griffin, Congregational Life Board Chair

Prayer and Care Board

QUILT MINISTRY - Team Leader, Pat Blevins

The quilt ministry had a full year with the blessing of 57 quilts to be distributed to overseas countries and also here at home. We also made and presented 9 quilts to our graduates going off to college. These quilts were designed in colors of the attending schools. We also presented retiring Bishop Mauney with a quilt as he gave his last sermon to our seniors. Pat Blevins and Kathryn Carpenter designed and put together a "stain glass " quilt for the 500 year Reformation which hangs in the sanctuary.

HEALTH AND WELLNESS - Team Leader, Arlene Gavitt

Health and Wellness met several times during the year. The blood pressure checks were moved up to twice a month. We hosted and chaired REFORMATION 500 race and picnic, did a window assessment of the congregation and identified opportunities to serve. One project we are passionate about is an adult forum on mental health, hopefully to bring about in 2018.

GREETING CARD MINISTRY - Team Leader, Sandy Sliger

A successful year for greeting cards. Close to 100 cards for various reasons were sent to our congregation who needed prayer and get well wishes. Cards were sent every month to our 10 shut-ins as well as confirmation, graduation, and to welcome new members. Children's birthday cards were sent to everyone under the age of 18. Enough inventory to ensure that the children's cards will not be a budget concern for 2018.

WELCOME BASKET MINISTRY - No Team Leader

There is not a leader, but Sandy Sliger will continue to put baskets together and ensure all have baskets ready to deliver to new friends as they visit Bethel

PRAYER SHAWL MINISTRY – Team Leader, Terri Ramsey

Three prayer shawls were given out in 2017. There were 7 baby blankets split between CCAP and Froggy Closet. We have several shawls in inventory whenever needed.

INTERCESSORY PRAYER - Team Leader, Urve Crowder

We participated in a healing service on Palm Sunday 2017. The team's major mission is to pray weekly for prayer request cards placed by members in 1 of 2 prayer boxes. During 5 plus years, 434 prayer cards have been retired. Currently the boxes contain 80 cards.

Submitted by
Pat Blevins, Prayer and Care Ministry Board Chair