

# 2016 Annual Ministry Reports



## Bethel Lutheran Church

[www.bethelwinchester.com](http://www.bethelwinchester.com)

*A community growing deeper in faith and wider in love.*



# Bethel Lutheran Church Leadership

## ***Council Members for 2017***

*President* – Tom Milburn  
*Vice President* – Bob Hollingsworth  
*Secretary* – Rose Pierce  
*Treasurer* – Traci Shoberg

Pat Blevins  
Trevor Brazelton  
David Griffin  
Adrian Pullen  
Julie Shanabrook

## ***Ministry Board Chairs for 2017***

*Worship Board* – Pastor Dave  
*Servant Board* – Julie Shanabrook  
*Learning Board* – Trevor Brazelton

*Congregational Life Board* – David Griffin  
*Prayer and Care Board* – Pat Blevins  
*Ministry Support Board* – Adrian Pullen

## ***Staff Email Addresses***

Pastor David Young  
Director of Youth & Faith Formation (Bryan Jaster)  
Director of Music Ministries (Darline DeMott)  
Accompanist/Organist (Larry Correll)  
Accompanist/Organist (Sue Correll)  
Director of Office Ministries (Terri Hollingsworth)  
Director of Finance (Kim Williams)  
Director of Facility Management (Cliff Crowder)  
Director of Information Management (Pat Shields)  
Faith Community Nurse (Arlene Gavitt)  
Director of Custodial Services (Patty White)  
Director of Nursery Care (Gretchen Meade)

[pastordave@bethelwinchester.com](mailto:pastordave@bethelwinchester.com)  
[bryan@bethelwinchester.com](mailto:bryan@bethelwinchester.com)  
[darline.demott@gmail.com](mailto:darline.demott@gmail.com)  
[larryg.correll@gmail.com](mailto:larryg.correll@gmail.com)  
[sueellen.correll@gmail.com](mailto:sueellen.correll@gmail.com)  
[office@bethelwinchester.com](mailto:office@bethelwinchester.com)  
[bookkeeper@bethelwinchester.com](mailto:bookkeeper@bethelwinchester.com)  
[office@bethelwinchester.com](mailto:office@bethelwinchester.com)  
[betheldatabase@aol.com](mailto:betheldatabase@aol.com)  
[office@bethelwinchester.com](mailto:office@bethelwinchester.com)  
[annwhite54@aol.com](mailto:annwhite54@aol.com)  
[office@bethelwinchester.com](mailto:office@bethelwinchester.com)

## Bethel Lutheran Church Telephone Information

Church Office		540-662-3245
Fax Number		540-450-1313
<b><i>Person</i></b>		<b><i>Extensions:</i></b>
Office		100
Pastor David Young	Pastor	105
Bryan Jaster	Youth and Family Faith Formation	104
Terri Hollingsworth	Director of Office Ministries	100
Darline DeMott Sue & Larry Correll	Director of Music Ministries	102
Kim Williams	Director of Finance	103
Cliff Crowder	Director of Facility Management	106
<b><i>Additional Phone Locations</i></b>		
Conference Room		112
Kitchen		113
Student Center "Underground"		116
Dale King	Director of Our Family Center	107

# Bethel Lutheran Church Organizational Structure

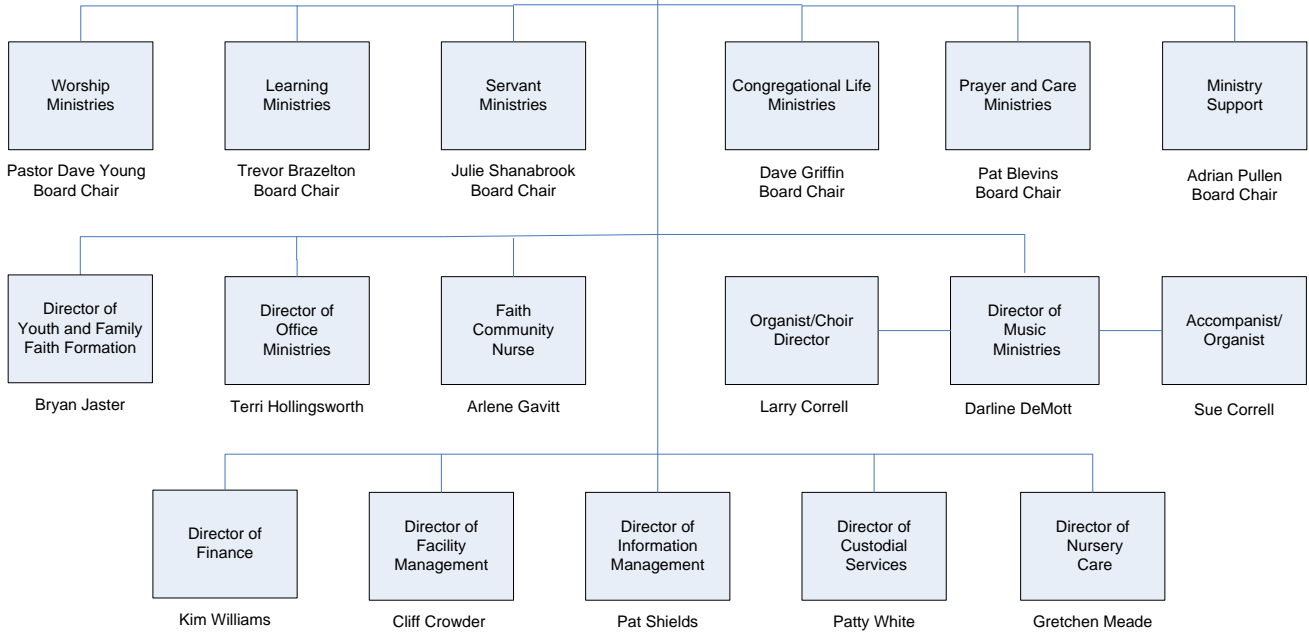
January 2017

2077 North Frederick Pike  
 Winchester, VA 22603  
 Church Office: 540-662-3245  
 Website: www.bethelwinchester.com  
 Email: office@bethelwinchester.com

Tom Milburn - President  
 Bob Hollingsworth - Vice President  
 Rose Pierce - Secretary  
 Traci Shoberg - Treasurer  
 Pat Blevins - Prayer and Care Board Chair  
 Trevor Brazelton - Learning Board Chair  
 Dave Griffin - Congregational Life Board Chair  
 Adrian Pullen - Ministry Support Board Chair  
 Julie Shanabrook - Servant Board Chair

Pastor  
 Dave Young

Congregation Council



## Annual Pastor's Report

*I pray that Christ may dwell in your hearts through faith,  
as you are being rooted and grounded in love," Ephesians 3: 16-17*

### Significant Events from 2016:

- 1) We rejuvenated our intentional small group ministry by rebranding it as **LIFT – Living in Faith Together**. We had two very successful small group experiences at Bethel this past year (one in Lent and the other during the late summer/early fall). We will be seeking to grow this into a significant strength for our congregation in the coming year.
- 2) During a time of financial uncertainty and struggle in the spring, Bethel “stepped up” and answered the call to meet our financial obligations and budget. By doing so, we were able to conclude the year in as good a financial situation as we have experienced in recent years. THANK YOU!
- 3) Bethel sent an amazing group of young people to Guatemala for our first dedicated “youth mission trip” in many years. It was a beautiful experience and very well may become a new part of our future Global Missions work here at Bethel.
- 4) We were pleased to have Shenandoah student Grace Eisenhower serve with us as our Interim Director of Music through the summer. I so appreciated her energy and attitude. After the summer, in an attempt to bring continuity back to our congregation’s music ministry, we named Darline Demott as our new Director of Music. I am thrilled because no one knows our Bethel music ministry as well as Darline. Subsequently, we hired Sue and Larry Correll to serve with us as organist and accompanist. We are looking forward to wonderful things in our future!
- 5) The congregation concluded our Jubilee campaign to pay down our mortgage. I want to thank Rex Ritchie, Traci Shoberg, Mike Stanfield, David Griffin, Terri Tripp, and Kathy Brown who served on our Jubilee team during this campaign. When we began the Jubilee campaign in 2013 the Principal balance was \$797,768. Through our Jubilee campaign, we paid it down \$484,464. Our current Principal balance is \$314,304. THANK YOU!

2016 saw 45 new members join our congregation, including 4 adult baptisms! Our average worship attendance remained steady – 240 in 2015 and 232 in 2016; the slight dip being due to only having only one service during the summer, which I expected. Still, I feel the move in the summer to one service was a very successful one for both our music leadership (i.e. ensemble, musicians) and for the general feel of worship during the summer (we had an average of over 200 each week).

I am so thankful for our wonderful staff. **Bryan Jaster** continues to be a bright and shining gift to Bethel through his work with our youth and family ministry! We are blessed by his faithfulness. **Terri Hollingsworth, Kim Williams,** and **Pat Shields** are tremendous colleagues and keep the office running efficiently and are tremendous team players and leaders. **Patty White, Cliff Crowder** and **Gretchen Meade** are valuable team members doing much of the behind-the-scenes tasks that make Bethel work well.

Finally, a sincere and heartfelt **Thank you** for all the ways that you have gone above and beyond to help support Bethel as we strive always to be *a community growing deeper in faith and wider in love!*

In Christ,  
Pastor Dave

## President's Report

*"What you do in your house is worth as much as if you did it up in heaven for our Lord God. We should accustom ourselves to think of our position and work as sacred and well-pleasing to God, not on account of the position and work, but on account of the word and faith from which the obedience and the work flow." Martin Luther*

Sisters and Brothers in Christ,

Typically, an annual report looks back on the past year and its challenges and blessings. And at Bethel we had many of each again in 2016. I like to focus on the blessings though:

- Successful Year of Giving of our time, talent and treasure.
- Jubilee continues to amaze as we paid down our mortgage significantly.
- Annual giving exceeded expenses due to the Congregation's outpouring and our staff's frugality.
- Our continued commitment to WATTS and the relationships that are made and grow each year.
- Bethel's global missions lived out in so many ways, including our youth's travels to Guatemala.
- Reception of wonderful new members to our family.
- Vibrant youth, women's and men's ministries.
- Our dedicated Christian education leaders and programming.
- The heavenly music and worship that our Ensemble, Music Directors and Pastor lead.

Your Congregation Council is an extraordinary group with varied experiences and talents. When the group meets, you can tell that the Spirit is at work. I would like to specifically thank the outgoing members – Tom Beyer, Greg Brondos and Karla King. Tom has served in every executive position and was president in 2015. Tom's wisdom, patience and historical knowledge of Bethel are invaluable and his steadiness was important as we tackled difficult issues. Greg led our Christian Education Board and added faith-filled insight to Council's deliberations. He has a way of seeing through the noise to the right thing to do and articulating the group's feelings that allowed us to continually move forward. Karla served as Vice President for the past two years and was a vocal leader. Karla's love for Bethel is obvious in her service and dedication. She continually challenged the Council to ask hard questions and be uncomfortable occasionally to get to the right place. Bethel thanks each of you.

We are blessed with a wonderful staff at Bethel. We all know that but as I have worked "behind the scenes" with each of them over the past year, I have a new appreciation for just how good each of them is at their job. Thanks to each of them every day for what they do to make Bethel work. And thanks to Pastor Dave, who tirelessly shepherds the flock, sets the course and makes Bethel a wonderful church.

Thank you to the Congregation. As a Council member, I feel like I am continually asking members to do something. I am always amazed at the positive responses I receive. The enthusiasm, faithfulness, love and joy our members show for this place is our greatest blessing.

Now it is time to look forward to 2017. Great things and events are happening at Bethel – Reformation 500: The Year of Luther and our discipleship emphasis to #ClaimtheName to just name two. We also welcome our new Council members and look forward to serving together (David Griffin, Trevor Brazleton and Bob Hollingsworth).

Peace,  
Tom Milburn  
Congregation Council President

## **The Year of Our Lord 2016**

### **Stories of the mission and ministry of youth and families forming faith together....**

Our every night, every home revolution at an evolutionary pace called Faith5 continues to grow in the character and competency of Jesus. We sent a team to “families on a mission” at St. John’s Lutheran in Baltimore. Cross+Gen Gatherings for Lent and Advent brought much laughter, blessing, and learning as we discover the “worthy ship” aka worship space where education and learning happen together. It’s a blast mixing the wisdom of the elder and the wonder of a child in the most age segregated time any culture has ever known. We’re still figuring out how to take the best of what we are learning about the brain, about the ancient future church, daily faith practices, about making disciples and bring it all together. In this day and age of “too busy” we dare to cling tight to holy time and space to share the most important story lest it is never known by generations to come!

Synod events are a huge gift to our youth and congregation. Our time up on the mountain at Eagle Eyrie for 7<sup>th</sup> Day, and Lost and Found were glorious. The snow out of Winter Celebration left a huge hole in our year for high school youth even though we did our best with a plan B overnight that actually gathered a great group of visitors and friends.

Our year of Confirmation continues to be gift for freshman students, families and mentors who learn the information, imitation and innovation of making disciples of one another. We experienced the challenge of increasing, competing priorities of schedule and families when trying to regularly gather together. This is one more reminder of Luther’s old words made new that parents are bishops and pastors to their children in proclaiming the gospel. Confirmation camp and the story of Luke were tremendous through the leadership of Pastor Dave and many synod pastors. Youth remarked “Jesus doesn’t seem, well, Jesus-y in Luke.” ☺ The closing gathering around the labyrinth, meal and worship on reformation is powerful, holy time. Our 7 youth sharing faith on reformation Sunday captivated our community.

Bethel Week at Camp – Caroline Furnace continues to experience a wondrous rebirth. We had 20 children and youth from Bethel go to camp the last week of July for “The Jesus Way”. In our time of increasing reliance on technology to mediate relationships there is a great gift in the place apart camp is. Everyone serves, worships, prays, listens, loves, heals, plays, and learns at camp! Our youth director serves as camp chaplain for the week.

Vacation Bible School – Cave Quest in June brought over 60 kids, 30 youth and 20 adults together for a glorious week learning about the God who is the light of the world! We went BIG on turning our hallways into dark caves with dozens of stalactites, stalagmites and rock formations. We partnered with Lutheran Family services to supply the summer therapeutic day treatment program with science and math educational materials. It was inspiring to see many churches in our community come together to help children who need it most.

Feed the Need – Last April 6 Winchester congregations united for a weekend of living in a box, time with homeless speakers, service projects around town, packaging 14,000 meals and worshipping together. We had about 100 middle and high school youth united in the love of Jesus for our neighbors who gave a significant amount of time, money and effort together. This was a first of hopefully many years coming together to serve.

Youth Mission in Guatemala – [wearegraces.org](http://wearegraces.org) – We sent 14 youth and adults to La Escuela Integrada in Antigua, Guatemala to listen, serve, purchase “estufas” for families, bring food to people during home visits and return home with the story of Jesus. It was holy time for our youth and we plan to continually engage in the love of Guatemalan children and work of the school. Our congregation gave away thousands of dollars through “La Noche De Guatemala” fundraiser, child sponsorships, money for food and estufas.

Most importantly, celebrate all the daily and weekly moments of laughter, service, reflection, action and discovery that is faith formation that happens at home, at school, and whenever and wherever we gather. We live in a time where the message of the cross and the kingdom coming is truly unique, counter cultural and a surprising gift to the world around us. We continue to love and live like Jesus together in 2017!

In the hope of the empty tomb,  
Bryan Jaster



## Music & Arts Ministries Report

Greetings! It is my pleasure to recap yet another year of changes in the music ministry for Bethel. I am humbled by your confidence placed with me as overall director of the ministry, and hope not to disappoint.

This summer, we said goodbye to our Interim Music Director, Grace Eisenhauer and welcomed Sue and Larry Correll to the music team. The Correll's dove right in this fall and led us through Advent and Christmas with beautiful anthems and a particularly moving Christmas Eve service filled with special music. We were especially pleased that many of our talented Bethel family shared their musical gifts during the pre-service music – thank you!

Christmas in a Barn enjoyed another “sell out” crowd, and the weather was mild enough to open the barn doors and add seats outside. The final count was over 300 people in worship, and the service included the usual happy gathering of returning college students, teens and their families forming up our Chime Choir along with a special offering from the Sunday School Choir, “*Whatcha Gonna Call that Baby?*”. Our Bethel musicians Barbara Simmons and Jacob Pembleton, and I joined the chimers in leading the familiar carols of the day. Special thanks as always to Dave, Nick and Ian Shoberg for setting up and running the sound, and to the Milam family for heading up the logistics of set up and take down, and managing the “hay”. We have been doing this together for many years!

Behind the scenes, members of the Ensemble have been and are assisting Sue and I in reorganizing and cataloging Bethel's music library. Special thanks to Robin Forrest for helping us put the anthems in numerical order in the files!

Every time we make a change in the music leadership, it takes us all a little time to settle into a comfort level where we come to understand each other's signals, leadership styles, expectations, preferences, and in the case of the instrumentalists, find our “groove.” We've been working on that these last few months and I am happy to say that phase is largely behind us. The Ensemble is a special group of people, and I would like to take a moment to give them all a “verbal standing ovation” for their dedication and commitment to this ministry, to each other, and to you. We love what we do!

In 2017, I hope to engage our children in music opportunities, as well as encourage instrumentalists to not wait until Christmas Eve to share their gifts again. You'll be hearing from me! I also invite those who like to sing, to join the Worship Ensemble – we know you are out there singing, come join us! High school on up welcome -- rehearsals are 7pm – 8pm on Thursday evenings. Sing at either service – give it a try!

Blessings,  
Darline DeMott  
Director of Music Ministries

**MINISTRY INCOME**

**REGULAR TITHES & OFFERINGS**

Envelope & Loose Offerings	\$476,191	
<b>SUBTOTAL TITHES &amp; OFFERINGS:</b>		<b>\$476,191</b>

**FACILITY USE INCOME**

Other Facility Use	\$13,805	
<b>SUBTOTAL FACILITY USE:</b>		<b>\$13,805</b>

**OTHER INCOME**

Interest & Investment Income	\$ 90	
Thrivent Choice	\$4,308	
<b>SUBTOTAL OTHER INCOME:</b>		<b>\$4,398</b>

**TOTAL MINISTRY INCOME:** \$494,394

**MINISTRY SPENDING**

**COMMITMENT TO THE WIDER CHURCH**

Virginia Synod Benevolence Commitment	\$33,800	
<b>SUBTOTAL WIDER CHURCH:</b>		<b>\$33,800</b>

**WORSHIP**

Altar & Sanctuary Care Ministries	\$596	
Music Ministries	\$3,247	
Resources & Publications	\$2,275	
Special Events-Christmas in a Barn	\$274	
Other	\$896	
<b>SUBTOTAL WORSHIP:</b>		<b>\$7,288</b>

**LEARNING**

Curriculum & Supplies	\$3,833
Annual & Special Events	\$119
Vacation Bible School	\$1,131
Other	\$53

**SUBTOTAL LEARNING: \$5,136**

**CONGREGATIONAL LIFE**

Youth	\$1,847
F3-Children's Group	\$77
Adults	\$50
Annual & Special Events	\$1,084

**SUBTOTAL CONGREGATIONAL LIFE: \$3,058**

**SERVANT**

WATTS	\$0
Feed the Need	\$532
Other	\$0

**SUBTOTAL SERVANT: \$532**

**CARE**

Welcome Baskets	\$574
Greeting Cards	\$460
Funeral Receptions	\$195
College Care Packages	\$237
Faith Community Nursing	\$0
Other	\$28

**SUBTOTAL PRAYER & CARE: \$1,494**

**STEWARDSHIP**

Leadership Development and Recruiting	\$1,473
Communication	\$1,994
Devotional Materials	\$271
Supplies and Materials	\$3,412
Other	\$0

**SUBTOTAL STEWARDSHIP: \$7,150**

**STAFF PAYROLL**

Salaries	\$211,540	
Taxes & Benefits	<u>\$77,429</u>	
<b>SUBTOTAL STAFF PAYROLL:</b>		<b>\$288,969</b>

**ADMINISTRATION**

Office Supplies	\$1,810	
Shipping & Postage	\$1,071	
Copier Lease and Printing	\$4,585	
Equipment Repairs & Upgrades	<u>(\$380)</u>	
<b>SUBTOTAL ADMINISTRATION:</b>		<b>\$7,086</b>

**UTILITIES**

Alarm Monitoring	\$1,887	
Electric	\$15,566	
Gas	\$18,303	
Telephone	\$1,923	
Internet Access	<u>\$3,540</u>	
<b>SUBTOTAL UTILITIES:</b>		<b>\$41,219</b>

**FACILITY**

Repairs & Materials	\$8,013	
Lawn Care & Snow Removal	\$15,398	
Parsonage Repairs	\$428	
Trash Removal	\$1,743	
Pest Control	\$559	
Cleaning Supplies	\$2,066	
Insurances & Licenses	\$10,658	
Other	<u>\$414</u>	
<b>SUBTOTAL FACILITY :</b>		<b>\$39,279</b>

**MORTGAGE LOAN EXPENSE**

Mortgage Loan Payments	<u>\$38,364</u>	<u>\$38,364</u>
------------------------	-----------------	-----------------

<b>TOTAL MINISTRY SPENDING:</b>	<b><u>\$473,375</u></b>
---------------------------------	-------------------------

<b>INCOME:</b>	<b><u>\$21,019</u></b>
----------------	------------------------

---

**MORTGAGE LOAN**

Principle remaining as of December 31, 2016	<u>\$314,304</u>
---	------------------

Contributions needed each year to pay monthly mortgage	\$38,364
--	----------

**JUBILEECAMPAIGN RESULTS**

Principal Balance at December 31, 2012	\$797,768
--	-----------

Principal Balance at December 31, 2016	\$314,304
--	-----------

Overall Decrease in Principal Balance	<b><u>\$483,464</u></b>
---------------------------------------	-------------------------

---

**DESIGNATED MINISTRIES**

**FOR THE WORLD**

World Hunger Appeal	\$7,390	
Tanzania Missions	\$6,435	
The Philippines Missions	\$292	
India Missions	\$1,342	
General Missions	\$683	
Global Christmas	\$8,535	
Harvest Sunday	\$2,077	
Bethel Madness –Massae shoes	\$178	
Quilt Ministry	\$127	
	<hr/>	
<b>SUBTOTAL:</b>		<b>\$27,059</b>

**FOR THE COMMUNITY**

CCAP	\$8,474	
Good Samaritan	\$673	
West Virginia Flood Relief	\$655	
Luke’s Backpacks (Anna Havron ordination)	\$549	
WATTs	\$900	
Miscellaneous	\$0	
Jones/Joyner Music Fund	\$7,090	
	<hr/>	
<b>SUBTOTAL:</b>		<b>\$18,341</b>

**FOR THE BETHEL COMMUNITY**

Student Mission Scholarships	\$825	
Mortgage Principal Payments	\$40,987	
Youth (Easter, Guatemala, other)	\$2,672	
Martins Cards Cash for Causes (Youth)	\$0	
Bethel Park & Scatter Garden	\$4,600	
Memorials	\$4,390	
	<hr/>	
<b>SUBTOTAL:</b>		<b>\$53,474</b>

**TOTAL DESIGNATED:** **\$98,874**

## **Prayer and Care Board**

### **Funeral Receptions:**

Total of 3 funeral receptions for 2016  
Jan.12 Ed Lundin; 100 in attendance  
Mar.22 Bill Pierce; 60 in attendance  
Oct. 12 Sue Cole; 100 in attendance

### **Prayer Shawl Ministry:**

Prayer shawls are continually made to add to our supply to give out to those that can be comforted by being wrapped in love. Six prayer shawls were given out. We also added baby blankets to distribute to shelters in town. Eight blankets and two hats have gone to Abba Care and to CCAP.

### **Intercessory Prayer Ministry:**

Currently has 92 active prayer requests in the Prayer Box that the team covers weekly. There is another box that contains 115 retired and answered prayers. Special prayers were offered by the team during Bethel Church Council meeting dates over the summer. The team took part in a healing service held on Palm Sunday 2016 and is planning a service for April 2017.

### **Quilt Ministry:**

Fifty-eight quilts were blessed and transported to New Windsor Md.  
Seven Senior Quilts were blessed and presented to 2016 seniors that attend Bethel.

**Health and Wellness:** No Report

**Greeting Card Ministry:** No Report

**Welcome Basket and Delivery:** No Report

Respectfully submitted  
Board Chair, Pat Blevins

## **Servant Board Ministries**

### **Harvest Sunday - Julie Shanabrook**

Many thanks to everyone who participated in our 15th annual Harvest Sunday! We were able to raise \$ 2076.55 for Lutheran World Relief. We were aided by a \$250 Thrivent Action Teams grant. Our donation will support internally displaced Syrians with cash-for-work community development projects and baby, school, and personal care kits, as well as supporting LWR's partner, ACT Alliance, as it provides fleeing Syrian refugees with humanitarian support (quilts, coats and blankets, emergency shelter, and psychosocial support). According to the United Nations High Commissioner for Refugees (UNHCR), 4.8 million persons have fled to Turkey, Lebanon, Jordan, Egypt and Iraq, and 6.6 million are internally displaced within Syria. Meanwhile about one million have requested asylum to Europe. We continue to be grateful that through Harvest Sunday Bethel can contribute to the mission of Lutheran World Relief: "Affirming God's love for all people, we work with Lutherans and partners around the world to end poverty, injustice and human suffering."

### **Hoedown - Dana Francis**

The Hoe Down continues to be a blessing to all those who attend. We were able to hold our festivities outside and Dave Shoberg spun all the best hoe down hits! Thanks to the generosity of the Bethel community, we continue to host a group of 150 NW works members and their families.

### **WATTS (Winchester Area Temporary Thermal Shelter) - Judy McKiernan and Schottelkorb**

Thanks to our wonderful Bethel Congregation and a host of volunteers and partners from other congregations and civic groups we, once again, had a successful and grace filled WATTS week at Bethel in February 2016. We were at capacity each night. In addition to nutritious hot meals each evening, Lisa McKee provided haircuts one evening, showers were available two evenings, breakfast was served each morning and a packed lunch was available for those who desired one. Evenings included a variety of entertainment, music from the Redland Praise Team, bingo by Westminster Canterbury, movies, games and good old fashioned fellowship with lots of hugs and warm smiles.

### **Bethel Global Missions - Bruce Lathrop**

1. Global Christmas - Bethel's Global Christmas raised \$2200.00 for Concordia Children's Services in Manila Philippines, \$2175.00 For Massai Girls Lutheran Secondary School in Arusha, Tanzania, \$1605.00 for Operation Bootstrap Africa's medical missions in Arusha, Tanzania, and \$1335.00 for Bethania Kids in India and \$1200 for the Bethania Women's Empowerment Program. This totals over \$8500 of direct assistance to our mission partners.
2. Operation Bootstrap Africa - Arusha Lutheran Medical Center continues to expand programs. Training in Nursing and surgery training programs are increasing the availability of care. A new dialysis unit provides care that patients could previously only receive by moving to Dar es Salaam. The "Plaster House" provides care for rural children to from surgery in a clean, safe environment with access to follow up care.
3. Bethania Kids - Bethania Kids has laid out a five year plan for the mission. The centerpiece of the plan is Shalom home, a facility that houses and cares for girls from poor families that have lost one or both parents. Plans also include micro-loans for women to start small businesses, vocational training, and continuing education.
4. Concordia Children's Service - Howard and Earlene Kernnitz visited Concorida in April. Concordia continues to care for children living in poverty in Manila. Concordia's recent focus on financial sustainability is bearing fruit. Recent government certifications have provided tax advantages for donors within the Philippines, and facilitated growth in funding. Cash reserves have added stability to the mission.



5. Opportunities for growth - Going forward, the Global Missions Team will be considering a partnership with Bethel Youth in forming a partnership with Escuela Integrada in Antigua, Guatemala, and contemplating methods for channeling support to regions in crisis, possibly through Lutheran World Relief.
6. Future Mission trips - Possible future mission trips include a journey to Concordia in 2018, and a Youth mission trip to Guatemala in 2019.