

# 2015 Annual Ministry Reports



## Bethel Lutheran Church

[www.bethelwinchester.com](http://www.bethelwinchester.com)

*A community growing deeper in faith and wider in love.*



# Bethel Lutheran Church Leadership

## ***Council Members for 2016***

*President* – Tom Milburn  
*Vice President* – Karla King  
*Secretary* – Rose Pierce  
*Treasurer* – Traci Shoberg

Tom Beyer  
Pat Blevins  
Greg Brondos  
Adrian Pullen  
Julie Shanabrook

## ***Ministry Board Chairs for 2015***

*Worship Board* – Pastor Dave  
*Servant Board* – Julie Shanabrook  
*Learning Board* – Greg Brondos

*Congregational Life Board* – Tom Beyer  
*Prayer and Care Board* – Pat Blevins  
*Ministry Support Board* – Adrian Pullen

## ***Staff Email Addresses***

Pastor David Young  
Director of Youth & Faith Formation (Bryan Jaster)  
Interim Director of Music (Grace Eisenhauer)  
Assist. Director of Music Ministries (Darline DeMott)  
Director of Office Ministries (Terri Hollingsworth)  
Director of Finance (Kim Williams)  
Director of Facility Management (Cliff Crowder)  
Director of Information Management (Pat Shields)  
Director of Custodial Services (Patty White)  
Nursery Attendant (Gretchen Meade)

[pastordave@bethelwinchester.com](mailto:pastordave@bethelwinchester.com)  
[bryan@bethelwinchester.com](mailto:bryan@bethelwinchester.com)  
[geisenha11@su.edu](mailto:geisenha11@su.edu)  
[darline.demott@gmail.com](mailto:darline.demott@gmail.com)  
[office@bethelwinchester.com](mailto:office@bethelwinchester.com)  
[bookkeeper@bethelwinchester.com](mailto:bookkeeper@bethelwinchester.com)  
[office@bethelwinchester.com](mailto:office@bethelwinchester.com)  
[betheldatabase@aol.com](mailto:betheldatabase@aol.com)  
[annwhite54@aol.com](mailto:annwhite54@aol.com)  
[office@bethelwinchester.com](mailto:office@bethelwinchester.com)

## Bethel Lutheran Church Telephone Information

Church Office		540-662-3245
Fax Number		540-450-1313
<i>Person</i>		<i>Extensions:</i>
Office		100
Pastor David Young	Pastor	105
Bryan Jaster	Youth and Family Faith Formation	104
Terri Hollingsworth	Director of Office Ministries	100
Grace Eisenhauer	Director of Music Ministries	102
Kim Williams	Director of Finance	103
Cliff Crowder	Director of Facility Management	106
<i>Additional Phone Locations</i>		
Conference Room		112
Kitchen		113
Student Center "Underground"		116
Caring Corner (Nurse)		107
Poison Control		800-222-1222
Frederick County Fire		665-5618
Sheriff's Office		662-6162
Winchester Medical		536-8000
Health Department		722-3480
Social Services		665-5688

Using Bethel Phones In Case of Emergency:  
Press "Line 1". Once you hear the dial tone, call 911.

# Bethel Lutheran Church Organizational Structure

February 2016

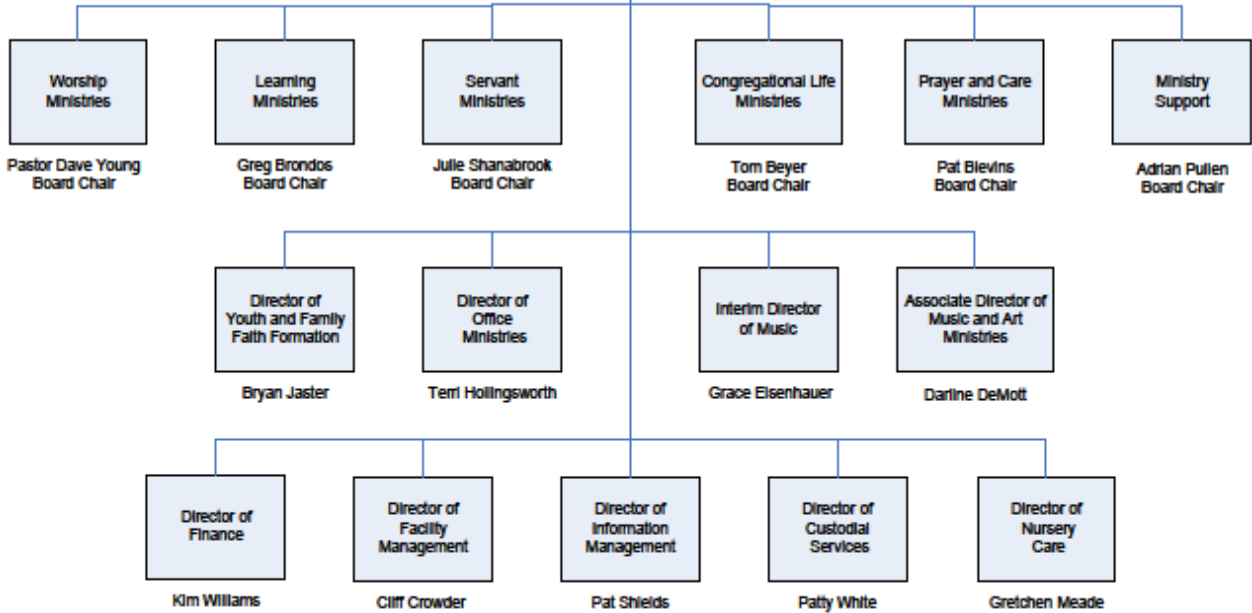
2077 North Frederick Pike  
 Winchester, VA 22603  
 Church Office: 540-662-3245  
 Website: www.bethelwinchester.com  
 Email: office@bethelwinchester.com

Congregation Council  
 Tom Milburn  
 President

Karla King – Vice President  
 Rose Pierce – Secretary  
 Traci Shoberg – Treasurer  
 Tom Beyer – Congregational Life Board Chair  
 Pat Blevins – Prayer and Care Board Chair  
 Greg Brondos – Learning Board Chair  
 Adrian Pullen – Ministry Support Board Chair  
 Julie Shanabrook – Servant Board Chair

Congregation Council

Pastor  
 Dave Young



## Annual Pastor's Report

*I pray that Christ may dwell in your hearts through faith, as you are being rooted and grounded in love," Ephesians 3: 16-17*

Significant Events from 2015:

- 1) In January, a team from Bethel (Jack McAllister, Bob and Terri Hollingsworth, Urve Crowder, Jennifer and Wayne Lafollette, Daniel Milam, Renee Cummings, and Pastor Dave Young) visited our Tanzania missions -- the Massae Lutheran Girls Secondary School (20<sup>th</sup> Anniversary Celebration), Arusha Lutheran Medical Center, and the Plaster House, and the new ALMC Nursing School.
- 2) The congregation rallied around Doug and Cindy Newell, and raised over \$52,000 to help him in his long-awaited desire for a kidney transplant. Doug received his new kidney in December.
- 3) In July, as marriage laws around the country changed, and in accordance with council support from December, 2014, I presided at the service for long-time members, Lee Braithwaite and Guy Guiman.
- 4) Bethel sent an amazing group of young people to the 2015 National Youth Gathering in Detroit, with 28 youth and adults attending.
- 5) We said goodbye in October to our Director of Music, **George Donovan**, who served us well; with creativity, passion, and love.
- 6) "Bethel Park" saw the development and building of our new Memorial Garden, which was dedicated on All Saints Day in November. Appropriately, Pastor Conrad Christianson was the first person to have his ashes interred here at Bethel.

2016 saw an increase in membership and a decrease in worship attendance. This change is emblematic of a decade-long trend in worship attendance patterns that is affecting all manner of congregations, regardless of size, denomination, location, etc. Still, at Bethel, we continue to engage the vast majority of our congregation in one ministry or another. Addressing this and like trends will be a focus of our Bethel council during 2016.

I give thanks for our wonderful staff. **Bryan Jaster** continues to love, serve, and guide our youth and family ministry in a style that is all his own! He is a wonderful partner in ministry and we are blessed by his faithfulness. **Terri Hollingsworth**, **Kim Williams**, and **Pat Shields** continue to keep the office running smoothly and effectively and are tremendous team players and leaders. **Patty White**, **Cliff Crowder** and **Gretchen Meade** are valuable team members doing some of the behind-the-scenes tasks that make Bethel work well.

Finally, a sincere and heartfelt **Thank you** for all the ways that you have gone above and beyond to help support Bethel as we strive always to be *a community growing deeper in faith and wider in love!*

In Christ,  
Pastor Dave

## **President's Report**

This has been a year of blessings and challenges but one that has provided tremendous evidence of God's love. I give thanks for the faithful and dedicated body of Christ that is Bethel. A few I will mention but there are so many others that respond with love when called.

Our Pastor and staff are a true blessing. The dedication and efforts are greatly appreciated and a witness to God's providing and love.

The highlights of the year are many. The realization of the Bethel Park and the completion of the memorial garden is a blessing to our home here at Bethel. The initiation of the Fifth Sunday worship opportunities brought us together to worship as one congregation and enjoy good fellowship.

Music Ministry remains a highlight of our worship experience and we give thanks for our wonderful ensemble and the blessing of the talented musicians and voices. We give thanks especially for the gifted leadership George Donovan, Darlene DeMott and the gift of Richard Jeric. May the coming year see some stability of this valued piece of our worship experience.

While we were challenged with a tight budget, the responsiveness to special needs was overwhelming and a testimony to how loving a family we have here at Bethel. Our outreach and response to Jesus' call to love one another is so evident in our response to individual needs, global mission efforts and local community needs, such as our gift of hosting Our Family and the Watts guests. We are indeed blessed.

I must give thanks to our dedicated thoughtful council members and ministry response teams who have answered the call and provide guidance as we attempt to follow Jesus' plans for us. (Jeremiah 29:11).

May the peace of the Lord be with you and Bethel as we go into this new year. Thank you for the honor of serving as president this past year.

Tom Beyer  
Council President

## Youth and Family Faith Formation Report

Just a few of youth and family faith formation moments...

Once upon a time in the Northern Shenandoah Valley, God dared to breathe, live and move into the neighborhood. We witness God's mighty acts and respond with trust!

Our revolution at an evolutionary pace called Faith5 is hitting stride. We have a vision we are living into of "every night in every home" where a living, loving vibrant faith is sung, shared, blessed and known by all. It's a vision that takes the best of what we are learning about the brain, about the ancient future church, daily faith practices, about making disciples and dares us to live into it together. We took some great steps during Lent and Advent 2015 that continue to bring heapings of joy and challenge to our little extended family on a mission.

Synod events are a huge gift to our youth and congregation. Our time up on the mountain at Eagle Eyrie for 7<sup>th</sup> Day, Lost and Found and Winter Celebration were true rushing wind moments of the Spirit.

The year of Confirmation continues to be a light for freshman students, families and mentors who learn the information, imitation and innovation of making disciples of one another. The closing gathering around the labyrinth, meal and worship on reformation is holy time. "Wow our youth can preach!" proclaimed a grandmother of our church on Reformation day.

Vacation Bible School – G-force in June brought over 50 kids, 20 youth and 30 adults together for a glorious week learning about the God in whom we live, move and exist! A week of MOVE, ACT, CARE, FOLLOW, and SHARE finished with our kids giving \$300 toward a local organization that connects families with autistic children to the services they need and a wrestling match between "Wise Guy" Jimmy Cicero vs the Pastor of Disaster and the Jaster of Disaster. It was a close match but we were BODY SLAMMED!

RISE UP! July 2015. Over 30,000 ELCA Youth and Adults gathered with 28 from Bethel who journeyed with new friends from Muhlenberg Lutheran in Harrisonburg for a week serving, learning and celebrating life as Jesus' people together. We continue to RISE UP together as one of our senior's says was "the best week of life imaginable".

We also celebrate all the daily and weekly moments of laughter, service, reflection, action and discovery that is faith formation that happens at home, at school, and whenever and wherever we gather. This truly is a powerful time as we witness to God's kingdom coming all around us – May we boldly love and live like Jesus together in 2016!

In the hope of the empty tomb,  
Bryan Jaster



## Music & Arts Ministries 2015 Report

This report is on behalf of the many wonderful, dedicated singers and musicians I am honored to serve beside and represent. We love leading Bethel in music, worship and praise!

The last three months of 2015 brought change to our ministry with the resignation of our music director, George Donovan, Jr. We were blessed with incredible talent and leadership as Richard Jeric stepped in as interim director through the end of January 2016. I could fill an entire page with kudos and gratitude, but suffice it to say that the choir has thoroughly enjoyed working with Richard! We understand that he must focus on his studies and commitments at Shenandoah University, and wish him the very best. Richard promises to remain a part of the Bethel family – he will always be welcome.

Another blessing in the form of Grace Eisenhauer has stepped onto the scene. She is also studying at Shenandoah and has recently accepted the interim director position through the end of May, and possibly beyond. The choir enjoyed working with Grace as she subbed for Richard occasionally – welcome, Grace!

Other choir notes – our Sunday School Choir and Middle School Chimers are two lively groups each meeting two Sundays a month during Sunday School. Both groups provided special music for the Christmas in a Barn service this year.

And speaking of the barn service, special thanks to Barbara Simmons, Kelly Francis, Bert Poling, the Middle School Chimers and their teachers, the Sunday School Choir, and to the Shobergs for running the sound. The barn team is part of another ministry, and it is an excellent team – but the music resides with this ministry.

The OffeRings bell choir for high school and adults brought beautiful handbell music to our worship service during 2015, and is, sadly, a casualty of the leadership change. Such endeavors take time in planning, set up and take down, scheduling and communications, rehearsal leadership, and so on... something beyond what can be expected from a part-time director. The group will be invited to reconvene during the summer to provide a few chime anthems, under my direction.

I end this report with thanks – thanks to you, Bethel family, for your support and encouragement and commitment to the music programs we lovingly labor to provide. It is your smiling, singing faces that lift us up each Sunday. You are a blessing to us!

In Christ,

Darline DeMott  
Associate Director, Music Ministries

## MINISTRY INCOME

### REGULAR TITHES & OFFERINGS

Envelope & Loose Offerings	\$454,726	
<b>SUBTOTAL TITHES &amp; OFFERINGS:</b>		<b>\$454,726</b>

### FACILITY USE INCOME

Other Facility Use	\$14,263	
<b>SUBTOTAL FACILITY USE:</b>		<b>\$14,263</b>

### OTHER INCOME

Interest & Investment Income	\$ 84	
Thrivent Choice	\$1,958	
<b>SUBTOTAL OTHER INCOME:</b>		<b>\$2,042</b>

---

**TOTAL MINISTRY INCOME:** \$471,031

## MINISTRY SPENDING

### COMMITMENT TO THE WIDER CHURCH

Virginia Synod Benevolence Commitment	\$32,500	
<b>SUBTOTAL WIDER CHURCH:</b>		<b>\$32,500</b>

### WORSHIP

Altar & Sanctuary Care Ministries	\$919	
Music Ministries	\$5,305	
Resources & Publications	\$1,783	
Special Events-Christmas in a Barn	\$105	
Other	\$1,976	
<b>SUBTOTAL WORSHIP:</b>		<b>\$10,088</b>

**LEARNING**

Curriculum & Supplies	\$5,552
Annual & Special Events	\$448
Vacation Bible School	\$1,221
Other	\$52

**SUBTOTAL LEARNING: \$7,273**

**CONGREGATIONAL LIFE**

Youth	\$7,937
Adults	\$377
Annual & Special Events	\$184

**SUBTOTAL CONGREGATIONAL LIFE: \$8,498**

**SERVANT**

WATTS	\$274
Other	\$247

**SUBTOTAL SERVANT: \$521**

**CARE**

Welcome Baskets	\$156
Greeting Cards	\$127
Funeral Receptions	\$149
Faith Community Nursing	\$0
Other	\$0

**SUBTOTAL PRAYER & CARE: \$432**

**STEWARDSHIP**

Leadership Development and Recruiting	\$1,481
Communication	\$2,820
Devotional Materials	\$271
Supplies and Materials	\$3,387
Other	\$112

**SUBTOTAL STEWARDSHIP: \$8,071**

**STAFF PAYROLL**

Salaries	\$215,713	
Taxes & Benefits	\$80,290	
<b>SUBTOTAL STAFF PAYROLL:</b>		<b>\$296,003</b>

**ADMINISTRATION**

Office Supplies	\$1,999	
Shipping & Postage	\$1,554	
Copier Lease and Printing	\$4,284	
Equipment Repairs & Upgrades	\$2,151	
<b>SUBTOTAL ADMINISTRATION:</b>		<b>\$9,988</b>

**UTILITIES**

Alarm Monitoring	\$1,002	
Electric	\$18,482	
Gas	\$17,317	
Telephone	\$1,420	
Internet Access	\$3,540	
<b>SUBTOTAL UTILITIES:</b>		<b>\$41,761</b>

**FACILITY**

Repairs & Materials	\$12,133	
Lawn Care & Snow Removal	\$9,268	
Parsonage Repairs	\$310	
Trash Removal	\$1,365	
Pest Control	\$828	
Cleaning Supplies	\$3,815	
Insurances & Licenses	\$10,570	
Other	\$0	
<b>SUBTOTAL FACILITY :</b>		<b>\$38,289</b>

**MORTGAGE LOAN EXPENSE**

Mortgage Loan Payments	<u>\$50,508</u>	<u>\$50,508</u>
------------------------	-----------------	-----------------

<b>TOTAL MINISTRY SPENDING:</b>	<b><u>\$503,932</u></b>
---------------------------------	-------------------------

<b>INCOME:</b>	<b><u>\$(32,901)</u></b>
----------------	--------------------------

---

**MORTGAGE LOAN**

Principle remaining as of December 31, 2015	<u>\$392,128</u>
--	------------------

Contributions needed each year to pay monthly mortgage	\$38,364
---	----------



## Worship Board

This past year has been one of transition for us in worship, especially with George Donovan leaving as our Director of Music. His time with us brought energy, creativity and new programs. We were indeed blessed by his time with us.

In his stead, we hired Richard Jeric as the interim Director of Music. Richard, who had come into our church as an accompanist for Sunday morning, served with us through January, 2016. At that time, Richard left to pursue more fully his doctorate at Shenandoah.

We will be continuing a search for a permanent Director of Music. In the meantime, we will be hiring a local Shenandoah student, Grace Eisenhauer, to serve with us through May. The current plan is to form a task force who will consider various options for us to continue our vibrant and eclectic worship experiences.

Despite the transitional nature of the year, we have had some wonderful experiences. In April, we hosted Rachel Kurtz, singer and songwriter, who is known from all her ministry within the ELCA and especially at the National Youth Gathering. It was a great joy to have her with us.

We continued with meaningful mid-week worship services during both Lent and Advent. During the summer we attempted to offer a mid-week worship service, but it was rarely attended and did not seem to meet the need we felt it could. Still, it was worth the effort.

In the aftermath of a change in Director of Music, our adult handbell choir made the decision to stop for the time being. There are still people interested in this ministry, but until we are able to have more stability in our Director of Music position, this music ministry will be on hiatus.

We began, as part of the Year of Relating, a "Fifth-Sunday" Fellowship service. This was held each Fifth Sunday as an opportunity for everyone to worship together at 10:00am, followed by a time of fellowship/education. It was widely appreciated by the congregation.

Our Easter and Christmas worship experiences were, as usual, highlights of the year. Both "high holy days" offered wonderful attendance and spirit-filled and spirited worship. In particular, the "Christmas in a Barn" service was a tremendous success, with over 400 in attendance.

With our children, we made the change to having the Praise Kids and Middle-school chimers meet during Sunday school time, to best allow for more children to participate. Under the wonderful tutelage of Darline Demott, these two groups offered us meaningful and regular worship offerings. It is been a successful move and we plan to continue this into the near future.

As always, worship remains a "calling card" for our congregation. We are blessed by the myriad number of members who offer their gifts to the Ensemble, to special music, to our kids groups, lead us in prayer, offer children's messages, assist with Holy Communion, and even preach on occasion. We are a gifted and blessed congregation and it helps make our worship thrive together.

In Christ,  
Pastor Dave

## Servant Board Ministries

### **WATTS – Marion Schottelkorb & Judy McKiernan**

Thanks to our wonderful Bethel Congregation and a host of volunteers and partners from other congregations and civic groups we, once again, had a successful and grace filled WATTS week at Bethel in February 2015. We were at capacity each night. In addition to nutritious hot meals each evening, Lisa McKee provided haircuts one evening, showers were available two evenings, breakfast was served each morning and a packed lunch was available for those who desired one. Evenings included a variety of entertainment, music from the Redland Praise Team, bingo by Westminster Canterbury, movies, games and good old fashioned fellowship with lots of hugs and warm smiles.

### **WATTS for Dinner Spaghetti Dinner – Joy Stull**

The Spaghetti Dinner for 2015 was in benefit of WATTS – Winchester Area Temporary Thermal Shelter. The dinner was held on Saturday, November 14, in Discipleship Hall. It was another great festive evening and meal, prepared by John Tilelli, served by Bethel Youth and the fundraising committee. This year we added homemade meatballs. Members of our Bethel family contributed wonderful desserts. We added a silent auction with homemade items, the remaining Je Suis Christian t-shirts (sold for the Doug Newell fundraising campaign), and the Worship Choir CD. The event raised a total of \$2159.05 for WATTS (\$1359.05 from the event plus \$800 in matching funds from Thrivent Financial Caring in Communities Abounds Program). According to Marion Schottelkorb, Executive Director of WATTS, these dollars will enable WATTS to provide shelter for 4 guests for one month.

Thank you to everyone who supported the Dinner, either by their participation or their contributions. You have helped WATTS to make a difference in our community – one person at a time.

### **Harvest Sunday - Julie Shanabrook**

Our 14th Harvest Sunday raised \$2,254.50. With the addition of a \$500 match from Thrivent Financial, we were able to send \$2754.50 to Lutheran World Relief's Nepal Fund. The produce, baked goods, and crafts we enjoyed were a church wide effort and the outdoor fellowship was enjoyed by all. Donations of produce by Marker Miller and Cline's Produce were appreciated. Thanks to everyone who planted, harvested, baked, canned, and created to make this offering happen. Our gift was on the cutting edge as LWR's October Special Report focused on their efforts in Nepal!

### **The Hoe Down - Dana Francis**

The Hoe Down was another great success this year. The weather necessitated a transfer to Discipleship Hall, but thanks to the flexibility of the clients and the fast moving and thinking of the helpers, it went off without a hitch. We continue to have a good turnout of approx. 180 people. I am always grateful for the generosity of the congregation in providing the necessary food and help needed to make this event a fun time for all involved.

### **Global Missions Team Report for 2015 – Rod Williams**

**Mission Highlights:** The highlight of the year was a visit to Tanzania in January. Jack McAllister, Pastor Dave, Wayne and Jennifer LaFollette, Bob and Terri Hollingsworth, Urve Crowder, and Dan Milam made the trip. Arusha Lutheran Medical Center and the MaaSae Girls Lutheran Secondary School continue to thrive and, of course, greatly benefit from Bethel's support. Thanks go out to Jack and Jane McAllister for being the champions of our Tanzania mission.

In India, Bethel's support of Bethania Kids is ongoing, thanks to the particular efforts of mission champions Rex and Helen Ritchie, and, in the Philippines, we continue our support of Concordia Children's Services, with a debt of gratitude to mission champions Howard and Earlene Kemnitz.

**Bethel's Global Christmas:** The GMT again conducted its "***Bethel's Global Christmas***" fundraiser this past year. The fundraiser allows people to purchase "gifts" in the form of contributions to one of our missions – the perfect gifts for those who already have many blessings or just to support our missions. This past year, we raised approximately \$10,000 through Bethel's Global Christmas.

The Global Missions Team is humbled and grateful for the generosity of Bethel's members in supporting our mission efforts and for the opportunity to lead those efforts.

Respectfully Submitted,  
Dean Cole



## Congregational Life

Bethel continues to have a vibrant and active congregational life as shown by the numerous activities for women, men, and youth held throughout the year.

**Adult Ministries:** In 2015, existing small groups continued to meet and a few targeted small groups were held at various times throughout the year.

**Men's Ministries:** The men had a retreat November 20-22 at Graves Mountain Lodge and continue to meet regularly for breakfasts.

**Faith Box Building:** While few in number, the faith box building team continues to provide faith boxes for baptisms, first communion, and confirmations.

**Shrimp Boil Gathering:** The Shrimp Boil was held again this year with another stellar turnout. We look forward to continuing to offer this fellowship opportunity in 2016.

**Receptions:** This is an amazing team that has organized and provided food/drink for our many celebrations this past year, such as First Communion, fifth Sundays, and Anna Havron's ordination.

**Women's Ministry:** Throughout the year, Bethel women gathered for Girl's Night Out and a few Bible studies. On April 10-12, women joined in fellowship, thoughtful conversation, and laughter at the Priestfield Pastoral Center in Kearneysville, WV. A large turnout of women met again for the Christmas Banquet on December 13.

Thank you to all the great team leaders in 2015 that contributed so much to this ministry. THANK YOU!

Respectfully Submitted,  
Jennifer LaFollette, Chair

## Ministry Support

The Kitchen Upkeep team spent a great deal of time and effort to clean out the kitchen, organize the space, label every drawer and cupboard, and then put everything back where it belongs. Please help the kitchen volunteers by putting things back in their proper places and cleaning up behind you.

The Property Upkeep team has been busy keeping the lights on at Bethel. Many people have joined us for our Saturday work parties. The team is always available when things break or need to be broken. Special thanks go out to Dave Shoberg who does so much around the building. Last year saw him tear out a wall (he meant to do it) and fix some flooding, among the many jobs he tackles for Bethel. He also wired Ethernet to the Nurse's office. Dave's sons are following in his footsteps, Ian mows the back 40 during the summer and even enjoys it.

Special thanks also go out to Charlie Moyer who continues to fix issues before the rest of us even notice there is a problem. If there is a light bulb out it is because it just blew out and Charlie hasn't walked by yet.

And of course, Cliff Crowder is the volunteer maintenance guru who keeps everything organized and lets the rest of us know what needs to be done. He and Dave cleaned out the gutters that were long overdue. He was instrumental in getting the Parsonage winterized. He also rescued me off the very steep Parsonage roof, so he is literally a life saver.

The Set Up and Take Down team is, as always; ready to jump into action at a moment's notice. If you need anything moved or set up around the church, send me an email and I will email the team. They like to compete to see who can get there first and finish the job. Usually, by the time I finish my email someone has already been to the church and finished the job.

Sandy Hulver has the Weekly Offering Team operating like a well-oiled machine. There are never any problems and that means everything is running smoothly. Please consider becoming part of the team, they can always use more counters.

Ever notice that the building is always open and ready for guests when you arrive for church? That is because of the great team of Openers and Closers. Openers show up every Sunday and make sure the building is ready for service. And Closers stay after second service to lock up and turn the lights out.

I am sure there are many people and projects I have forgotten, as there are so many things going on that keep Bethel up and running. So thank you to everyone involved in Ministry Support, named and unnamed. You all make Bethel the special place that it is.

Shawn Garner, Chair