

2014 Annual Ministry Reports



Bethel Lutheran Church

www.bethelwinchester.com

A community growing deeper in faith and wider in love.

Bethel Lutheran Church Leadership

Council Members for 2015

President – Tom Beyer
Vice President – Karla King
Secretary – Bruce Lothrop
Treasurer – Traci Shoberg

Greg Brondos
Cory Carlson
Tom Milburn
Adrian Pullen
Julie Shanabrook

Ministry Board Chairs for 2015

Worship Board – Pastor Dave
Servant Board – Dean Cole
Learning Board – Amy Jaster

Congregational Life Board – Jennifer LaFollette
Prayer and Care Board – Irene Cockerham
Ministry Support Board – Shawn Garner

Staff Email Addresses

Pastor David Young
Director of Youth & Faith Formation (Bryan Jaster)
Director of Music Ministries (George Donovan, Jr.)
Assist. Director of Music Ministries (Darline DeMott)
Director of Office Ministries (Terri Hollingsworth)
Director of Finance (Kim Williams)
Director of Facility Management (Cliff Crowder)
Director of Information Management (Pat Shields)
Director of Custodial Services (Patty White)
Nursery Attendant (Gretchen Meade)

pastordave@bethelwinchester.com
bryan@bethelwinchester.com
george@bethelwinchester.com
darline.demott@gmail.com
office@bethelwinchester.com
bookkeeper@bethelwinchester.com
facility@bethelwinchester.com
betheldatabase@aol.com
annwhite54@aol.com

Bethel Lutheran Church

Telephone Information

Church Office		540-662-3245
Fax Number		540-450-1313
<i>Person</i>		<i>Extensions:</i>
Office		100
Pastor David Young	Pastor	105
Bryan Jaster	Youth and Faith Formation	104
Terri Hollingsworth	Director of Office Ministries	100
George Donovan	Director of Music Ministries	102
Kim Williams	Director of Finance	103
Cliff Crowder	Director of Facility Management	106
		107
<i>Additional Phone Locations</i>		
Office Work Room		109
Conference Room		112
Christianson Room		115
Classroom #3		119
Classroom #6		118
Kitchen		114
Library		113
Student Center "Underground"		116
<i>Emergency Numbers</i>		
Poison Control		800-222-1222
Frederick County Fire		665-5618
Sheriff's Office		662-6162
Winchester Medical		536-8000
Health Department		722-3480
Social Services		665-5688

Using Bethel Phones In Case of Emergency:
Dial 9 first to get an outside line. Once you hear the dial tone, call 911.

Bethel Lutheran Church Organizational Structure

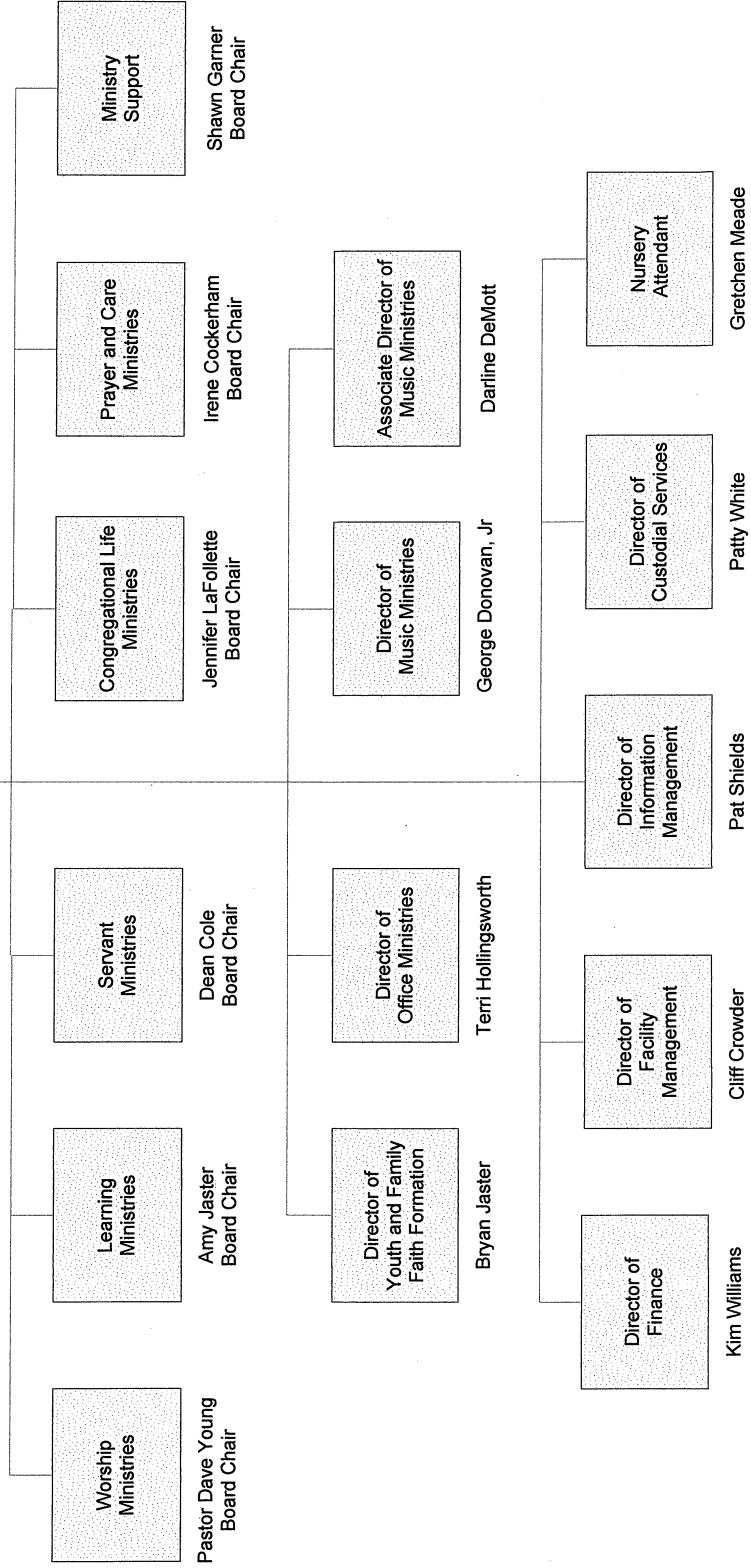
2077 North Frederick Pike
 Winchester, VA 22603
 Church Office: 540-662-3245
 Website: www.bethelwinchester.com
 Email: office@bethelwinchester.com

Congregation Council
 Tom Beyer
 President

Karla King – Vice President
 Bruce Lothrop – Secretary
 Traci Shoberg – Treasurer
 Greg Brondos (Liaison to Prayer and Care Ministries)
 Cory Carlson (Liaison to Ministry Support)
 Tom Milburn (Liaison to Servant Ministries)
 Adrian Pullen (Liaison to Congregational Life Ministries)
 Julie Shanabrook (Liaison to Learning Ministries)

Pastor
 Dave Young

Congregation Council



2014 Annual Pastor's Report

I pray that Christ may dwell in your hearts through faith, as you are being rooted and grounded in love,"
Ephesians 3: 16-17

There were many highlights in 2014 that were emblematic of our vision – **Deeper Faith, Wider Love.**

- 1) The hiring of **Bryan Jaster** as our Director of Youth and Family Faith formation. Already we are seeing the fruit of a dedicated staff member in this vital area of ministry.
- 2) The work of the Jubilee campaign team (Rex Ritchie, Steve Francis, Traci Shoberg, Dave Griffin, and Kathy Brown) which is leading us toward the day when we no longer have a mortgage. We are now well under \$470,000 and hopeful to be able to retire this mortgage in the next couple of years.
- 3) The “Bethel Park” planting of memorial trees, completion of the walking path, and vision for future plans is tremendous. Cory Carlson, John McAlister and so many others have participated to make this a great new opportunity for service, worship, and blessing.
- 4) Our India Mission Team (Pr. Heidi David-Young, Rex Ritchie, Steve Wander, Kristin Dehaven, and Gus Brondos) brought us some amazing images of the inspiring work being done through our partnership with Bethania Kids. Hosting Paramadass, from Bethania Kids, during September was another opportunity to see the benefits of our mission there.

I continue to give thanks for our wonderful staff. **George Donovan** continues to lead outstanding worship experiences (so excited we've made him “full-time” beginning in 2015)! **Terri Hollingsworth, Kim Williams,** and **Pat Shields** continue to keep the office running smoothly and effectively with wonderful creativity and vision. **Patty White** and **Gretchen Meade** remain valuable team members doing some of the behind-the-scenes tasks that make Bethel work well. And we are delighted to welcome **Cliff Crowder** as our new Director of Facilities, and already he has been a great blessing to us.

It is with fondness and gratefulness that we also say goodbye to **Becky Jurich**, who stepped down as Faith Community Nurse. Her six years of service at Bethel has been a wonderful gift!

Finally, a sincere and heartfelt **Thank you** for all the ways that you have gone above and beyond to help support Bethel as we strive always to be *a community growing deeper in faith and wider in love!*

In Christ,
Pastor Dave

Dear friends,

Last year (2014) was the final year of my most recent term on the Bethel Council, and I was blessed to serve as your Council President for the year. Overall it was a great year! Bryan Jaster joined our staff as Director of Youth and Family Faith Formation; we promoted George Donovan to serve full time as our Director of Music Ministries; and Cliff Crowder graciously volunteered to serve as our director of Facility Management.

We installed Ron Lauck, Gary Nichols, and Sara Smith as our new trustees.

We made tremendous strides in the creation of Bethel Park with the completion of the walking trail, and the planting of dozens of trees, and we reduced our mortgage balance by over \$104,000 thanks to your generosity, and the hard work of our Jubilee Team.

We continued to support local ministries such as WATTS and C-CAP as well as our global ministries in India, the Philippines, and Tanzania. We sent a team of youth and adults to aid our neighbors in New Jersey still reeling from the damage caused by Hurricane Sandy.

We accomplished a great deal that we can all be proud of. But unfortunately, as I reported to you in November, our giving did not keep pace with our work. We missed fully funding our 2014 Ministry Spending Plan by over \$27,000. This is troubling, especially considering that the 2015 MSP that we approved in November is higher than last year's plan.

So let me share with you three thoughts about the joy of giving the first portion of what we receive to the Lord:

1. When we give, we get to build something much bigger than us that will last much longer than we will. When we give, we embrace our role in God's plan to see people raised to life in Christ. God invites us as partners to build His Kingdom. Partnering with Him enlarges our lives. *"Command them to do good, to be rich in good deeds, and to be generous and willing to share. In this way they will lay up treasure for themselves as a firm foundation for the coming age, so that they may take hold of the life that is truly life."* **1 Timothy 6:18-19**
2. When we give, we get to spread the Gospel to the world, and preach the Gospel to ourselves. We give because God first gave to us. Every time we give, we are thanking God for His generosity and preaching the Gospel with our gifts. *"For God so loved the world that he gave his one and only Son, that whoever believes in him shall not perish but have eternal life."* **John 3:16**
3. When we give, we get to open our hands to a God who cannot and will not be out given. God wants to pour into our lives. And faith opens our hands to receive from Him. Through faithful giving we experience the fullness of God's blessing. *"You will be enriched in every way so that you can be generous on every occasion, and through us your generosity will result in thanksgiving to God."* **2 Corinthians 9:11**

God has blessed us so richly. Won't you please consider how you might embrace the life of a joyful and faithful giver, committing the first portion of what you have been given to Him from all blessings flow?

It is a joy to worship and serve alongside you all. I hope 2015 is a year full of blessings for all of your families, and for Bethel.

Peace,

Mike Stanfield

The Year of Our Lord 2014

Once upon a time in the land of Winchester, Virginia there was a people called Bethel Lutheran Church. They inhabited in the holy space of God at the tippy top of the Shenandoah Valley. This people was called by Jesus to grow Deeper in Faith and Wider in Love at all times and spaces. Here's our story.

The year started off as it tends to do on January 1. At Winter Celebration in Eagle Eyrie a Jesus High entered the lives of many high school youth with hundreds of students in the Virginia Synod.

In the snowy days of February our new director of youth and family faith formation, Bryan Jaster, and family arrived. We made Meatloaf for our WATTS friends. Yum ☺.

We Marched on with 7th Day – an over night for 5th and 6th graders. Fish Are Friends – So says Luke (the Gospel) and Finding Nemo (the movie).

The Empty Tomb met up with a breakfast brunch on Easter day. More Yum.

We traveled, ropes coursed, ate and sang at Sweet Caroline Lutheran Camp. Twas a great day in God's beautiful country.

Old Rag Time Guys and Dolls – Well, high school youth and adults climbed Old Rag - she's a mountain. Twas another great day in God's beautiful country.

Kairos is the greek word for "God's time all the time". 2 youth and a youth director spent a week at Kairos which is also an event. We actually experienced God's time there too. Good times.

Jersey. Wow, indeed Jesus lives in Winchester. But, wow Jesus lives in New Jersey. 2.5 dozen hearts traveled, sweated, built, rebuilt, told stories, heard stories and returned with God's renewing Spirit beating in us and all fingers and toes intact. Jersey strong lives on.

The September phoenix rose from the ashes formerly known as middle school Sunday school. The new venture boldly going where no middle school group has gone before – led by Captain Shawn Luke Garner, Commander Becky T. Hall, Lieutenant Stephanie O'Mahan.

Hi's, Lows and hot dog pizza are regularly found gracing the mouths of high school youth. Brian Brooks (aka batman), Donna Turrill, and Cory Carlson make sure love, joy and real faith show up too.

Looking for another excuse to replace the green sanctuary carpet, Goats wearing Diapers preached a children's sermon during worship. Unfortunately they kept the diapers on and we still have lovely, green carpet.

Lutheran World Relief needed a Harvest Sunday with Goats (no diapers hence no green carpet). Besides goats, we had caramel apples, photo booth, and other fresh and preserved non-goat contributions.

Ninja Turtles, Wonder Woman, Batman, the Incredible Hulk and many super heroes came to worship. Word on the street is that we all, like Abraham, are now super heroes. Marvel and DC Comics have contacted us to put our youth on their payroll. Fundraising for the youth gathering DONE. (we hope).

We had Magic and Variety led by our ELCA Youth Gathering Youth and over 200 people together. Magical times with Kevin Owens and Nick Shoberg – magicians – and many youth and adults providing Variety. The fashion show may well be an international feast day of the church. Silent auction was silent and brought in money.

A traveling missionary team called Captive Free helped us package 14,000 meals for people starving. Laughter, fast moving assembly lines and God's work, Our Hands ruled the day.

Turns out Lost and Found is not just for clothes but middle school youth. Traveling with Grace Lutheran, we were lost and found at Eagle Eyrie with many of our synod friends. Yes, the bishop did the Pharaoh song.

Many of our beloved high school seniors were wrapped in handmade quilts and blessed for their college journeys. We also wrapped Molly Beyer with Bethel's love and a quilt and as she departed on journey in Madagascar.

A Faith 5 idea was conceived, incubated and birthed. Now what will happen to the infant? Will sharing, reading, talking, praying, and blessing become enrichuals for Winchester?

The sophomore year of a new mode for confirmation launched with confirmation student picking a fresh crop of ripe mentors.

Speaking of crops, kids taking communion for the first time learned about grapes and yeast becoming bread and wine. Soon they'll taste and see that the Lord is good using their own handmade communion chalices.

Christmas happens in a Barn both in the 1st century and this year. The singing, Word and people relished in God coming near. The white little lamb was cute. Shortly after, a new rapper hip hopped into town. P. Diddy aka Rev Skin aka Pastor Dave brought it with "Love Came Down".

This is our story. We are sticking to it. Stay tuned for future, wild ways of the Spirit.

Music & Arts Ministries 2014 Report

I cannot continue to boast enough about how great of an honor it is to serve the wonderful congregation called Bethel Lutheran Church. 2014 was another exciting year in the life of our music ministry. 2015 promises to continue in the same manner.

The springtime of 2014 began a journey of learning more about our worship together as a community. The year of Worship Planning Team conducted a brief congregational survey asking various questions about our worship gatherings. Through this survey we learned what the most important aspects of our worship are to us: Music and hearing the Word. As we journeyed deeper into the Year of Worship, we began revisiting the ancient tradition of Psalm Singing, a practice of the earliest Christian church, one that I hope will remain alive at Bethel for ages to come. This practice blends both the hearing and singing of God's word.

The summertime was full of rest and sabbatical for our music ministries, as we began discerning our future and goals. Fall 2014 brought a major project for our **Worship Choir and Band**, the recording and eventual release of our debut CD recording, "One Name", which we pray has brought the music of Bethel into your hearts and homes in a new way. Proceeds from this project will go to various other Music Projects in the future. Another highlight of the year for the worship choir was the addition of a paid accompanist for the choir, Carma Jones. This paid position is made possible through your generous donations to the Jones Music Fund, which we hope will continue.

The Jones Music fund received other generous donations throughout the year that enabled us to secure additional musicians for special worship times such as Easter, the Music Ministry's Christmas Concert in December, and our Christmas Eve Worship Gatherings.

OfferINGS Hand Chime Choir continued into its 2nd and 3rd seasons after a fantastic inaugural season in the fall of 2013. As this group of High School students and Adults continues to mature musically, we hope to expand our musical capabilities with the eventual purchase of hand bells to enhance the music we do.

December 2014 brought re-visioning to our **Children's Choir Ministry**. In an effort to involve more Elementary Age Students in our choir program, our schedule has now shifted from Friday afternoon rehearsals to incorporation of more music and singing during the Sunday School hour each Sunday. It is our hope that these students will begin sharing music periodically in our worship gatherings this spring. Many thanks to Darline DeMott for her continued ministry in this area.

Bryan Jaster has been working with several of our Youth Musicians, preparing special music for services and for the Underground Youth programs own worship times. We hope that this will be an opportunity for our youth to gain a sense of ownership and purpose in our music at Bethel.

As we look to 2015 and beyond, and as our music and arts ministries continue to grow as the Spirit leads us, we look forward to exciting years ahead. Some upcoming events and goals in 2015 include:

- Youth Band led worship gatherings
- The addition of a new music leading ensemble for our 11:00 AM Sunday Worship Gatherings
- Growth in our Children's Choir Ministry
- Special Concerts to include the *Harambee Gospel Choir* from Shenandoah University (Spring 2015), Roanoke College Choir (Date To Be Announced) and special offerings from our own musical groups at Bethel
- Renewed vision as we move to the future

We invite you to consider how you might be called to share your gifts of music and the arts. From singing in the choir, playing an instrument, acting and drama, and even behind the scenes needs, there is a place for you in our ministry together.

Blessings,

George Donovan, Jr.
Director of Music & Arts Ministries

MINISTRY INCOME

REGULAR TITHES & OFFERINGS

Envelope & Loose Offerings	\$475,718	
SUBTOTAL TITHES & OFFERINGS:		\$475,718

FACILITY USE INCOME

Other Facility Use	\$13,495	
SUBTOTAL FACILITY USE:		\$13,495

OTHER INCOME

Interest & Investment Income	\$ 87	
Thrivent Choice	\$900	
SUBTOTAL OTHER INCOME:		\$987

TOTAL MINISTRY INCOME: \$490,200

MINISTRY SPENDING

COMMITMENT TO THE WIDER CHURCH

Virginia Synod Benevolence Commitment	\$32,499	
SUBTOTAL WIDER CHURCH:		\$32,499

WORSHIP

Altar & Sanctuary Care Ministries	\$853	
Music Ministries	\$8,793	
Resources & Publications	\$3,556	
Special Events-Christmas in a Barn	\$547	
Other	\$1,603	
SUBTOTAL WORSHIP:		\$15,352

LEARNING

Curriculum & Supplies	\$3,131
Annual & Special Events	\$196
Vacation Bible School	\$22
Other	\$206

SUBTOTAL LEARNING: \$3,555

CONGREGATIONAL LIFE

Youth	\$3,772
Adults	\$205
Annual & Special Events	\$372

SUBTOTAL CONGREGATIONAL LIFE: \$4,349

SERVANT

WATTS	\$89
Other	\$170

SUBTOTAL SERVANT: \$259

CARE

Welcome Baskets	\$210
Greeting Cards	\$308
Funeral Receptions	\$175
Faith Community Nursing	\$200
Other	\$171

SUBTOTAL PRAYER & CARE: \$1,064

STEWARDSHIP

Leadership Development and Recruiting	\$2,160
Communication	\$4,958
Devotional Materials	\$264
Supplies and Materials	\$1,811
Other	\$2,596

SUBTOTAL STEWARDSHIP: \$11,789

STAFF PAYROLL

Salaries	\$195,518	
Taxes & Benefits	\$74,316	
SUBTOTAL STAFF PAYROLL:		\$269,834

ADMINISTRATION

Office Supplies	\$3,068	
Shipping & Postage	\$1,227	
Copier Lease and Printing	\$4,369	
Equipment Repairs & Upgrades	\$4,392	
SUBTOTAL ADMINISTRATION:		\$13,056

UTILITIES

Alarm Monitoring	\$1,040	
Electric	\$17,383	
Gas	\$21,095	
Telephone	\$1,967	
Internet Access	\$1,773	
SUBTOTAL UTILITIES:		\$43,258

FACILITY

Repairs & Materials	\$19,713	
Lawn Care & Snow Removal	\$14,541	
Parsonage Repairs	\$1,713	
Trash Removal	\$1,582	
Pest Control	\$739	
Cleaning Supplies	\$3,422	
Insurances & Licenses	\$9,925	
Other	\$0	
SUBTOTAL FACILITY :		\$51,635

MORTGAGE LOAN EXPENSE

Mortgage Loan Payments	<u>\$51,612</u>	<u>\$51,612</u>
------------------------	-----------------	-----------------

TOTAL MINISTRY SPENDING:	<u><u>\$498,262</u></u>
---------------------------------	-------------------------

INCOME (LOSS):	<table border="1"><tr><td>\$(8,062)</td></tr></table>	\$(8,062)
\$(8,062)		

MORTGAGE LOAN

Principle remaining as of December 31, 2014	<u>\$464,285</u>
---	------------------

Contributions needed each year to pay monthly mortgage	\$51,612
--	----------

DESIGNATED MINISTRIES

FOR THE WORLD

World Hunger Appeal	\$5,443
Tanzania Missions	\$6,301
The Philippines Missions	\$8,920
India Missions	\$8,085
General Missions	\$946
Global Christmas	\$11,635
Harvest Sunday	\$2,459
Malaria Nets	\$360
Quilt Ministry	\$387

SUBTOTAL: **\$44,563**

FOR THE COMMUNITY

CCAP	\$3,345
Elderly Food Drive	\$240
Good Samaritan	\$1,656
Financial Peace University	\$0
Habitat for Humanity	\$40
WATTs	\$590
Miscellaneous	\$70
Larry A Jones Musician Scholarship	\$7,206

SUBTOTAL: **\$13,147**

FOR THE BETHEL COMMUNITY

Student Mission Scholarships	\$1,083
VBS	\$0
Mortgage Principal Payments	\$68,708
Youth (magic show, soup, NJ trip, other)	\$13,144
Martins Cards Cash for Causes (Youth)	\$402
Bethel Park	\$8,201
Seminarian	\$2,350
Miscellaneous	\$400
Memorials	\$2,095

SUBTOTAL: **\$96,383**

TOTAL DESIGNATED:

\$154,093

2014 Annual Report Learning Ministry Board

Thank you to all of the volunteers who have made this year a success. Bethel continues to provide many opportunities for our members to study the word of God. We are blessed.

Sunday School: Leslie Brooks has done a fabulous job as the leader of our Sunday school programs. Our preschool teachers include Alice Matvay, Rhonda Dodson and Robin Forrest. The elementary school continues to use the same curriculum "Kingdom Quest" with Gordy (Greg Brondos) leading the large group time. Leslie Brooks and Kim Williams also lead the large group where they introduce the bible story for the day. We have many teachers Traci Shoberg, Jenny Shifflet, Amy Jaster, Eddie McKee, Mark Hoyle who shepherd the elementary children during crafts and games that support the message of the day. Rebecca Sigler, Dana Francis, and Rachel Carlson have been available to substitute when our shepherds are not available. Middle school has been a focus in the 2014-2015 year. Stephanie Mahan, Shawn Garner, Becky Hall and Bryan Jaster have totally changed the atmosphere and excitement during this time. They have been using a new curriculum called Re:form and the youth are responding well to the message. Brian Brooks and Donna Turrill with the help of Cory Carlson have lead our high school youth. The youth enjoy an assortment of meals from lasagna to tacos to breakfast casseroles. They often share highs and lows of the week and dive into the word of the Lord through a variety of means not using one curriculum. The favorite study was the gospel according to super heroes and dressing up as a favorite hero. Think of Jesus Christ as you watch Super Man "Man of Steele!" You will view the movie differently. The adult forum is led by Pastor David Young. He has organized several guest speakers.

Vacation Bible School- Kristi Riggelman was our director for VBS this year. The curriculum came from Cokesbury and was titled "G Force" (God's Love in Action). There were approximately 20 children who attended VBS this year on Monday through Thursday. The children enjoyed games, crafts, and story time to learn the message of God's love.

First Communion 2014: The children and their parents met with Pastor Dave approximately a month prior to their first communion. Pastor Dave provided the parents with a home based curriculum. After the families completed the home program, they came together for Family Day. During this time the children decorated a Chalice that they used to commune their families. Participants in First Communion were Jordan Branham, Ethan Grooms, Mia Hudson, Anthony Lutz, Jeremy Lutz, Tess McAlister and Sarah Newman.

Confirmation: Pastor Dave led the confirmands and their parents through a home-study program that he and Pastor Heidi David-Young wrote. The program encourages mentors to also guide the youth through the faith journey. This year Bethel confirmed the following youth: Maddie Brooks, Darby Garner, Anna Griffin, Laurel Griffin, Hannah Lothrop, Savannah McKee, and Daniel Milburn. Thank you to their mentors: Charlie Moyer, Carolyn Moyer, Greg Brondos, Kristen DeHaven, Dana Francis and Lee Braithwaithe.

Martin Luther Library- Sandy Sliger has continued to lead the team who helps to organize and maintain our library.

Advent Traditions potluck dinner- Donna Turrill and Stephanie Mahan led the team to set up for the dinner and the traditional wreath making. Approximately 25 advent wreaths were created using live greenery. Four blue candles represent the 4 Sundays prior to Christmas day and one white candle sits in the middle of the wreath. The white candle is known as the Christ candle and is to be lit on Christmas day. There are many different symbolisms for the blue candles- hope, peace, love, and joy.

Bethel continues to provide an array of learning opportunities for all ages. Thank you to all of the team leaders and members for 2014 who contributed so much to this ministry.

Peace and Blessings
Donna Turrill

**2014 Annual Report
Servant Board Ministries**

The following reports were received.

HOE DOWN – Dana Francis

We had another successful evening for the Hoe Down. Thanks to donations of time and food from the parishioners we were able to provide food and fun for upwards of 180 clients and family members of NW works. The weather was beautiful and the music was enjoyable. Everyone enjoyed socializing and it was nice to see old friends. This ministry continues to be a blessing to me and all those that attend.

ADVENTURE CAMP - Will Sigler

Adventure camp was a no go this year. We will try again for next year, maybe with a different format. If we cannot get the camp up and running next year(2015), we can remove it from the list.

ANGEL TREE – Rebecca Sigler

Bethel's Angel Tree was well supported as we used the Christmas in July concept for the second consecutive year. This year, families were able to choose a star (or two) from the display and bring back an item for the age written on the star. Over 50 gifts were purchased for needy children in our area. They will be distributed at the Christmas event sponsored by CCAP. Thanks to all who supported this valuable community outreach project!!

HOLY TOMATOE SPAGHETTI DINNER – Joy Stull

The Habitat dinner was placed on the calendar for November 8th in May. July 24th I sent out an email to John Tilleli, Katherine Carpenter, and Jan Lowder, requesting dates of availability, the beginning of August, to begin planning. Jan replied to my email immediately, informing me that the November slot would be offered to Watts, and that they would like to move their spaghetti dinner to April. I was copied on your email in response to this proposal. I responded to Jan that I cannot chair a spring dinner, because of prior commitments every spring. I do not know if anyone has agreed to do a spring Habitat Dinner. There has been no communications of any plans for this to be held in 2015.

WATTS – Marion Schottelkorb & Judy McKiernan

Once again the Bethel Congregation rallied to ensure that we had an amazing and successful WATTS week in February, 2014. There was not a thing that Marion or I requested that we did not receive. We were at capacity almost every evening. Once again our guests received haircuts, showers, foot baths, hugs and hot meals during the week. We are looking forward to our Bethel night on December 22 at the Ruritan Hall and our next WATTS week in February, 2015.

Respectfully Submitted,
Marion Schottelkorb

Annual Report 2014 Congregational Life

Bethel continues to have a lively and meaningful congregational life fueled by the many participants, coordinators, and team leaders.

Adult Ministries: In 2014, existing small groups continued to meet and a few targeted small groups were held at various times throughout the year. The small group ministry is in need of a leader for 2015. In addition, the 55+ group has been newly invigorated, meeting throughout the year, including a well-attended gathering at the Museum of the Shenandoah Valley. Look for more exciting opportunities in 2015.

Men's Ministries: The men had a retreat June 13-15 at Graves Mountain Lodge and continue meet regularly for breakfasts.

Faith Box Building: While few in number, the faith box building team continues to provide faith boxes for baptisms, first communion, and confirmations.

Sports Teams: In 2014, sports team were removed from the Ministry Response Form and moved to a sign-up sheet system. Bethel fielded a softball team again this year under the direction of Steve Ramsey and Steve Miller. In addition, there was a great turnout for Bethel night at the Winchester Royals game in the summer.

Shrimp Boil Gathering: The Shrimp Boil was held again this year with another stellar turnout. We look forward to continuing to offer this fellowship opportunity in 2015.

Receptions: This is an amazing team that has organized and provided food/drink for our many celebrations this past year including Stewardship Sunday, First Communion and new members.

Women's Ministry: On March 14-16, 39 women joined in fellowship, thoughtful conversation, and laughter at the Priestfield Pastoral Center in Kearneysville, WV. Alethea Allen led the group in discussion, using Ann Voskamp's book 1,000 Gifts as a guide. In addition to the program sessions, the women made special quilt blocks, had the opportunity for a chair massage, and participate in an afternoon tea. Saturday evening concluded with a memorable Prayer Around the Cross service. The women met again for the Christmas Banquet on December 7.

Thank you to all the great team leaders in 2014 that contributed so much to this ministry. THANK YOU!

Respectfully Submitted, Jennifer LaFollette, Chair